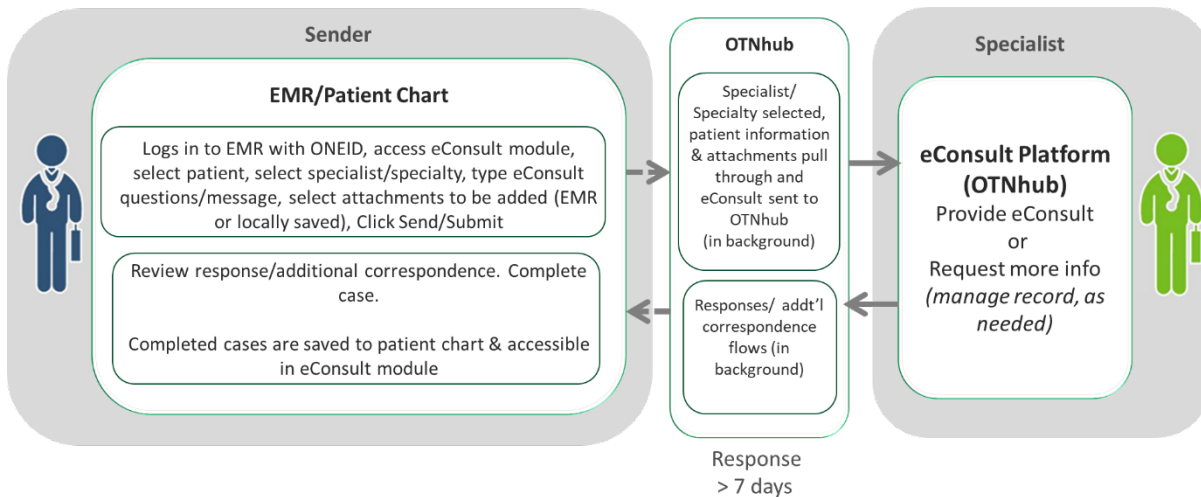


Accessing Ontario eConsult through EMR Integration

What is EMR Integrated Ontario eConsult?

EMR Integrated Ontario eConsult allows clinicians to seamlessly request and respond to eConsults as part of their EMR clinical workflows, directly within their EMRs. Patient demographic information is auto populated into each eConsult, and documentation can be easily attached from the patient record, making charting fast and simple. Approximately 100 clinicians are using eConsult through their EMRs and **90% of them have told OntarioMD** that it improves their clinical workflows and motivates them to use eConsult more frequently.



Notes: *Design based on Cerebrum integration, using the Ontario eConsult Service

EMR Integrated Ontario eConsult is currently available through **Avaros EMR, Cerebrum (AwareMD), YES EMR, and YMS EMR.**

For an updated list of fully-EMR integrated options available, please refer to: <https://www.ontariomd.ca/emr-certification/omd-certified-emr-offerings/integrated-ehr-products>

Who is leading EMR Integrated Ontario eConsult?

OntarioMD is leading the integration of eConsult with clinicians' Electronic Medical Record (EMR) systems. EMR-integrated eConsult complements the Ontario eConsult service currently available on OTNhub by offering clinicians an additional, convenient access point through their EMRs.

Why isn't my EMR Integrated with Ontario eConsult?

Access to the EMR integrated Ontario eConsult service will depend on the EMR vendor's specific timeline for incorporating eConsult into their EMR offerings. All OntarioMD-certified EMR vendors are encouraged to review the [EMR eConsult specification](#) and contact emr@ontariomd.com to facilitate deployment.

We encourage users to contact their EMR vendor and to continue using eConsult through [OTNhub](#) until your EMR is integrated with eConsult. Contact eConsultCOE@toh.ca or fill out our [intake form](#) for support with sending eConsults through the OTNhub.

What do I need to use EMR Integrated Ontario eConsult?

Clinicians interested in using EMR integrated eConsult must:

- Be using an EMR that is eligible for [EMR integrated eConsult](#).
- Be using a version of the EMR that is [certified by OntarioMD](#).
- Clinic: Must have OLIS (valid PKI Certificate)
- User: Must be eligible for a ONEID account to send an eConsult.

Where can I get more information about how to send an eConsult, using EMR Integrated Ontario eConsult?

The specific functionality of this integration varies from EMR to EMR and supporting documentation and training materials for these integrations are created and maintained by the EMR vendor.

Publicly available resources are listed here:

Avaros EMR: [Getting Started with eConsults & Managing eConsults](#)

Who do I contact to get more information about Ontario eConsult?

EMR Integrated eligible family physicians and nurse practitioners: Contact your OntarioMD Practice Advisor or email support@ontariomd.com

Not using an EMR eligible for eConsult EMR integration?

Contact eConsultCOE@toh.ca or complete our [Sender Intake form](#) to learn about other ways to send an eConsult.

Specialists who wish to receive/respond to eConsult inquiries: Complete the eConsult [Specialist Intake form](#) or contact the Ontario eConsult Centre of Excellence at eConsultCOE@toh.ca

OTNhub Technical questions: Contact OTN at 1-855-654-0888 or customercare@otn.ca

For information about the deactivation of the EMR-integrated access for Accuro® EMR users (effective February 28th, 2025) please visit <https://www.ontariomd.ca/products-and-services/econsult-deployment-and-emr-integration>.