



OntarioMD

Empowered Practices. Enhanced Care.

OntarioMD Stakeholder Report Products and Services by LHIN September 2019

Prepared: October 2019



PEER LEADERS



CLIENT SERVICES
AND ENGAGEMENT



EMR PROGRESS
ASSESSMENT TOOL



eCONSULT DEPLOYMENT
AND EMR INTEGRATION



EMR: EVERY STEP
CONFERENCE



INSIGHTS4CARE
i4C



OLIS
DEPLOYMENT



eNOTIFICATIONS



HEALTH REPORT
MANAGER



ON THE ROAD
WITH ONTARIOMD



eREFERRAL



EMR PRACTICE
ENHANCEMENT PROGRAM



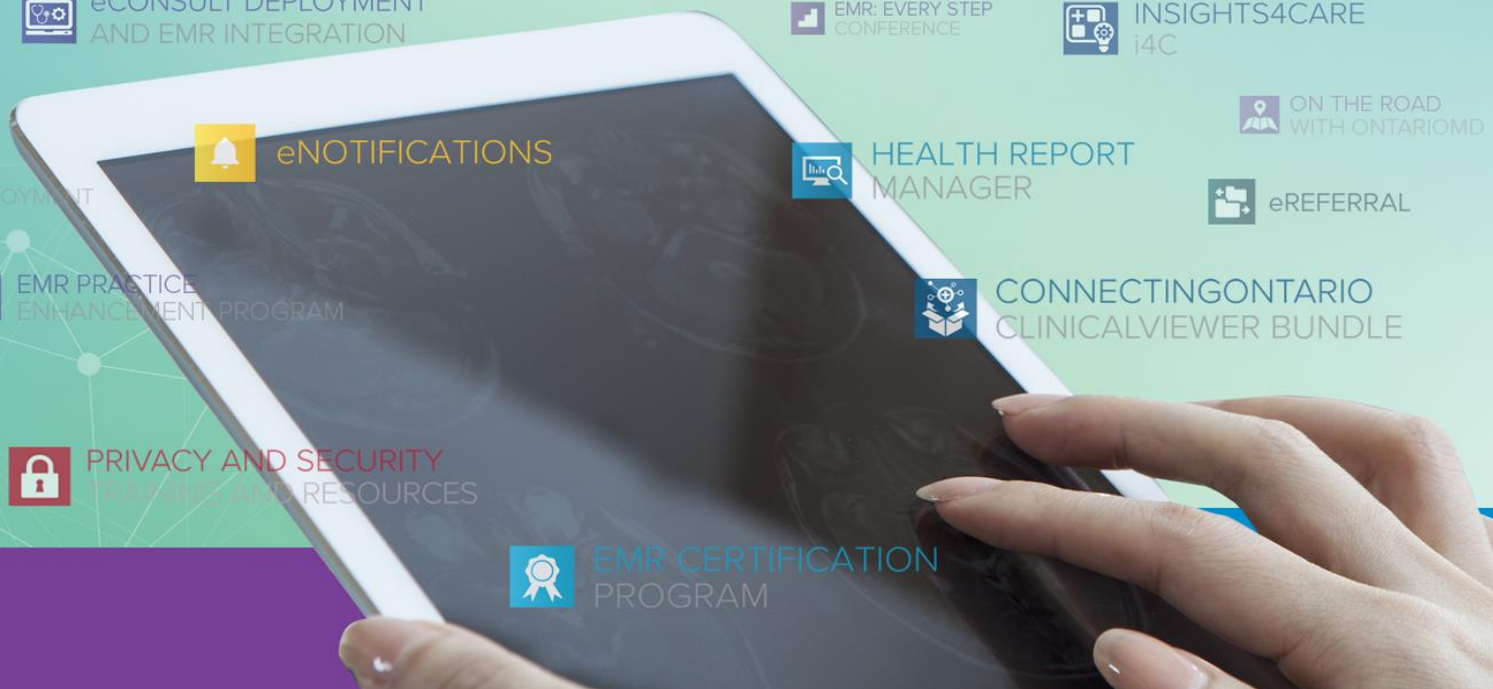
CONNECTINGONTARIO
CLINICALVIEWER BUNDLE



PRIVACY AND SECURITY
TRAINING AND RESOURCES



EMR CERTIFICATION
PROGRAM



Contents

| | |
|---|-----------|
| 1. EXECUTIVE NOTES FOR SEPTEMBER | 3 |
| 2. INTRODUCTION | 4 |
| 3. ONTARIOMD, ONTARIO HEALTH AND ONTARIO HEALTH TEAMS | 4 |
| WHAT WE DO | 4 |
| 4. ONTARIOMD PRODUCTS AND SERVICES..... | 5 |
| 5. QUARTERLY GROWTH BY PRODUCT/SERVICE | 6 |
| 6. TABLES BY VENDOR AND LHIN VIEW | 7 |
| TABLE 1: FAMILY PHYSICIANS, SPECIALISTS AND NURSE PRACTITIONERS BY ONTARIOMD-CERTIFIED EMR OFFERING PER PRODUCT / SERVICE | 7 |
| TABLE 2: PRODUCT PENETRATION BY COMMUNITY-BASED FAMILY PHYSICIANS AND SPECIALISTS BY LHIN | 8 |
| TABLE 3: CERTIFIED EMR OFFERINGS – INTEGRATED PROVINCIAL EHR PRODUCTS AND SERVICES | 9 |
| TABLE 4: HRM PRODUCT PENETRATION BY COMMUNITY-BASED FAMILY PHYSICIANS, SPECIALISTS AND NURSE PRACTITIONERS BY LHIN | 10 |
| TABLE 5: HRM AND OLIS PENETRATION BY PHYSICIANS BY LHIN | 11 |
| TABLE 6: ONTARIO eCONSULT ADOPTION AND UTILIZATION* | 13 |
| TABLE 7: ONTARIO eCONSULT PENETRATION BY LHIN* | 13 |
| TABLE 8: ONTARIO eCONSULTS SENT BY LHIN* | 14 |
| TABLE 9: i4C (FORMERLY EMR QUALITY) DASHBOARD PHASE 2 PHYSICIAN PARTICIPATION BY LHIN | 15 |
| TABLE 10: ONTARIOMD PRIVACY & SECURITY TRAINING COMPLETED BY LHIN | 15 |
| TABLE 11: ONE ID PRODUCT PENETRATION BY PHYSICIANS AND NURSES BY LHIN | 16 |
| 7. APPENDICES | 17 |
| 1.1 APPENDIX A: LHIN 1 – ERIE ST. CLAIR | 17 |
| 1.2 APPENDIX B: LHIN 2 – SOUTH WEST | 21 |
| 1.3 APPENDIX C: LHIN 3 – WATERLOO WELLINGTON..... | 25 |
| 1.5 APPENDIX E: LHIN 5 – CENTRAL WEST | 33 |
| 1.6 APPENDIX F: LHIN 6 – MISSISSAUGA HALTON | 37 |
| 1.7 APPENDIX G: LHIN 7 – TORONTO CENTRAL..... | 41 |
| 1.8 APPENDIX H: LHIN 8 – CENTRAL | 45 |
| 1.9 APPENDIX I: LHIN 9 – CENTRAL EAST | 49 |
| 1.10 APPENDIX J: LHIN 10 – SOUTH EAST..... | 53 |
| 1.11 APPENDIX K: LHIN 11 – CHAMPLAIN | 57 |
| 1.12 APPENDIX L: LHIN 12 – NORTH SIMCOE MUSKOKA..... | 61 |
| 1.13 APPENDIX M: LHIN 13 – NORTH EAST | 65 |
| 1.14 APPENDIX N: LHIN 14 – NORTH WEST | 69 |

1. Executive Notes for September

Sub-Region Reporting

This month's report includes information at the sub-region level for each LHIN. Please note that the totals in the sub-region tables are lower than the corresponding totals at the LHIN level. The reasons for these discrepancies are because some physicians do not map to a sub-region, or some physicians map to a sub-region that is part of a different LHIN. This is due to sub-region mapping being more current than LHIN mapping and changes to some LHIN borders. OntarioMD's data is based on the LHIN mapping before any changes. OntarioMD will be making changes to reduce these discrepancies over time.

Toronto EMR: Every Step Conference

On September 26, OntarioMD held its annual EMR: Every Step Conference in Toronto. The conference was attended by 580 clinicians, practice staff and vendors. Attendees could choose to attend sessions across four streams of digital health educational content (Insights for Clinical Enhancement, Using Your EMR to Manage Patient Care, Transformation & Innovation, and Integrating Digital Health with Ontario Health Teams). Feedback from the event rated the keynote speakers and the sessions very highly. Since 2012, more than 6,000 attendees have participated in OntarioMD's Every Step Conference.

New Certified EMR Offering

OntarioMD certified OSCAR McMaster – Professional Edition v1.0 on September 23. This EMR product is offered by WELL EMR Group (formerly KAI Innovations) as a hosted or local deployment model. The newly formed WELL EMR Group is a subsidiary of the publicly traded WELL Health Technologies Corp., which owns and operates 19 primary health medical clinics and provides EMR software and service to approximately 856 medical clinics across Canada. The company collaborates with the McMaster University Department of Family Medicine on OSCAR McMaster Professional Edition.

Supporting Our Partners

OntarioMD supports clinicians with innovative digital health and quality improvement tools and approaches required to address their practice needs and to enhance the provision of integrated care in Ontario Health Teams as they take shape across the province. OntarioMD supports system partners such as the Ministry of Health (MOH), the organizations that comprise Ontario Health and the Ontario Telemedicine Network (OTN), using a streamlined onboarding approach that bundles multiple digital health offerings in Ontario's digital health asset inventory into a single visit. This bundled approach is appreciated by clinicians for being more efficient and convenient.

Ministry of Health

OntarioMD is working with the MOH and eHealth Ontario to connect up to 250 community-based physicians and nurse practitioners who use OntarioMD-certified EMRs in 2020 to the **Digital Health Drug Repository (DHDR)** and **Digital Health Immunization Repository (DHIR)** from their EMRs.

Ontario Telemedicine Network's eVisits - OntarioMD continues to support existing users while the province explores expansion options and Benefits Evaluation results.

eConsult-EMR Integration The [EMR eConsult Specification](#) to guide vendors with certified EMR offerings to enable clinicians to connect to eConsult directly from their EMRs is available. OntarioMD will connect 800 additional clinicians by the end of March 2020.

2. [Introduction](#)

The purpose of this report is to provide a monthly update on the provincial view of community-based family physicians' and community specialists' adoption and optimized use of certified EMRs and digital health tools and services integrated with certified EMRs. Except where indicated, this report does not include information about adoption of the referenced digital health applications by nurse practitioners or other health care service providers.

By helping physicians become increasingly proficient EMR users, OntarioMD assists physician practices in realizing more clinical value and the full potential of digital health tools and services to enhance patient care. These tools and services are also improving Ontarians' access to care and improving clinical outcomes in an increasingly integrated and coordinated health care system.

3. [OntarioMD, Ontario Health and Ontario Health Teams](#)

OntarioMD is focused on the delivery of digital health products and services that translate into clinical value for physicians and their patients. OntarioMD has the infrastructure, relationships and experience to deliver cost-effectively the full spectrum of high-quality digital health programs and services for clinicians and Ontario Health Teams across the province in alignment with Ontario's Digital First Strategy. It works closely, and in partnership, with health care organizations across Ontario.

OntarioMD staff take a holistic approach to working with physician practices, bundling products and change management services on behalf of our stakeholders for efficient visits to practices regionally and locally. This reduces multiple touchpoints to the physician office and streamlines training and onboarding, so physicians can spend less time on administration and more time on patient care.

What We Do

- Connect clinician practices to OntarioMD's digital health tools that improve access to care, clinical outcomes and decision-making, such as Health Report Manager (HRM) and the i4C Dashboard.
- Connect clinician practices to eConsult on behalf of the Ontario eConsult Program, eVisits (Enhanced Access to Primary Care) on behalf of OTN, eNotifications in collaboration with HSSO, the DHDR and DHIR (when ready for deployment) on behalf of the Ministry, and deploy the

Ontario Laboratories Information System (OLIS), ConnectingOntario ClinicalViewer, ONE®ID and ONE Mail on behalf of eHealth Ontario.

- Provide physicians with trusted advice, guidance and onboarding support from OntarioMD staff, located across Ontario, to optimize EMR and digital health use
- Provide in-depth, hands-on support for physicians' quality improvement and population health management goals through our i4C Advisory Service's experienced staff
- Mentor physician practices with practical EMR tips from physician, nurse and clinic manager Peer Leaders who understand how physicians practice and share their expertise with the same EMR
- Manage EMR vendors and deliver a trusted EMR certification program that assesses and monitors EMR offerings for compliance with the Ontario EMR Specifications. OntarioMD certification provides assurance to physicians that their EMRs are providing clinical value and are facilitating the exchange of EMR data. Vendors know that OntarioMD understands clinicians and how to bring digital health tools into their practices.

4. OntarioMD Products and Services

OntarioMD products and services are provincial digital health assets for clinicians and centred around patients. Enabling the flow of patient information directly to OntarioMD-certified EMRs:

- Supports access to care, services and health information
- Enhances the efficiency of the health system
- Strengthens quality, effectiveness and accountability
- Stimulates innovation and growth

OntarioMD receives funding from the Ministry of Health (MOH), with a mandate to support connectivity, interoperability, and integration of EMRs with the digital health delivery system more broadly and to work with clinicians to optimize the clinical value of their certified EMRs to provide enhanced care to their patients.

For an overview of all OntarioMD products and services, please read our [Products & Services brochure](#).

5. Quarterly Growth by Product/Service

| Product/Category | Total Physicians (September 30, 2019) | Total Physicians (June 30, 2019) | Quarterly Growth |
|----------------------------------|--|-------------------------------------|------------------|
| Certified EMR | 15,974 | 15,728 | 1.6% |
| HRM | 9,530 | 9,205 | 3.5% |
| eNotifications | 9,084 | 8,405 | 8.1% |
| OLIS | 13,233 | 12,774 | 3.6% |
| eConsult Requesting Providers | 16,874 | 15,750 | 7.1% |
| eConsult Specialists Registered | 1,304 | 1,200 | 8.7% |
| ONE ID* | 19,905 | 18,867 | 5.5% |
| i4C Dashboard | 469 | 469 | 0.0% |
| Privacy & Security Training | 769 | 675 | 13.9% |
| ConnectingOntario ClinicalViewer | 822 | 624 | 31.7% |

*ONE ID data is received on a quarterly basis from eHealth Ontario and, as a result, will not show growth month over month.

6. Tables by Vendor and LHIN View

Table 1: Family Physicians, Specialists and Nurse Practitioners by OntarioMD-Certified EMR Offering per Product / Service

| EMR Vendor with a Certified EMR Offering | Physicians Live on a Certified EMR | | | | HRM | | | | eNotifications | Physicians Connected to OLIS ¹ |
|--|------------------------------------|--------------|---------------|---------------|--------------|--------------|------------|---------------|----------------|---|
| | FP* | SP** | Not Specified | Total | FP | SP | NP | Live | | |
| ABELSoft Corporation | 187 | 296 | 15 | 498 | 53 | 100 | 1 | 154 | 109 | 364 |
| Alpha Healthcare Inc. | 49 | 20 | 2 | 71 | 30 | 11 | | 41 | 44 | 63 |
| Avaros | 6 | | | 6 | 9 | | | 9 | 5 | |
| AwareMD | 1 | 66 | 1 | 68 | 1 | 87 | | 88 | 34 | |
| Canada Health Systems Inc. | 304 | 133 | 20 | 457 | 178 | 71 | 2 | 251 | 231 | 302 |
| Indivica Inc. | 532 | 126 | 19 | 677 | 418 | 86 | 5 | 509 | 504 | 426 |
| OSCAR EMR | 1,240 | 600 | 25 | 1,865 | 770 | 276 | 20 | 1,066 | 1,027 | 1,103 |
| P&P Data Systems Inc. | 401 | 77 | 10 | 488 | 128 | 7 | 7 | 142 | 133 | 285 |
| QHR Technologies Inc. | 2,029 | 2,054 | 167 | 4,250 | 1,182 | 1,176 | 155 | 2,513 | 1,779 | 3,881 |
| TELUS | 5,801 | 1,421 | 210 | 7,432 | 4,119 | 701 | 586 | 5,406 | 4,932 | 6,676 |
| WELL EMR Group | 1 | | | 1 | | | | | | |
| YES Medical Systems | 10 | 42 | 7 | 59 | 2 | 16 | | 18 | 13 | 56 |
| York-Med Systems Inc. | 25 | 74 | 3 | 102 | 5 | 29 | | 34 | 20 | 77 |
| Total | 10,586 | 4,909 | 479 | 15,974 | 6,895 | 2,560 | 776 | 10,231 | 8,831 | 13,233 |

¹ Source: eHealth Ontario

* FP = Community-based Family Physicians

** SP = Community-based Specialists

Table 2: Product Penetration by Community-Based Family Physicians and Specialists by LHIN

| LHIN | No. of Physicians participating in provincial product / service ¹ | | | | | Estimated number of FP and SP ³ | | | FP Penetration |
|--------------------------|--|--------------|---------------|---------------|---------------------|--|-----------------|---------------|----------------|
| | FP | SP | Not Specified | Total | Change ² | FP | SP ⁵ | Total | % |
| 1. Erie St. Clair | 368 | 255 | 28 | 651 | 9 | 479 | 490 | 969 | 77% |
| 2. South West | 829 | 368 | 38 | 1,235 | 6 | 911 | 1,270 | 2,181 | 91% |
| 3. Waterloo Wellington | 623 | 281 | 34 | 938 | 21 | 701 | 585 | 1,286 | 89% |
| 4. Hamilton Niagara | 1,052 | 669 | 46 | 1,767 | 17 | 1,183 | 1,822 | 3,005 | 89% |
| 5. Central West | 572 | 318 | 26 | 916 | 8 | 682 | 537 | 1,219 | 84% |
| 6. Mississauga Halton | 847 | 404 | 31 | 1,282 | 13 | 1,111 | 1,023 | 2,134 | 76% |
| 7. Toronto Central | 1,453 | 1,233 | 101 | 2,787 | 28 | 1,789 | 4,010 | 5,799 | 81% |
| 8. Central | 1,224 | 778 | 83 | 2,085 | 4 | 1,683 | 1,649 | 3,332 | 73% |
| 9. Central East | 1,013 | 571 | 46 | 1,630 | 23 | 1,225 | 1,147 | 2,372 | 83% |
| 10. South East | 484 | 238 | 19 | 741 | 5 | 544 | 674 | 1,218 | 89% |
| 11. Champlain | 1,373 | 645 | 41 | 2,059 | 8 | 1,612 | 2,000 | 3,612 | 85% |
| 12. North Simcoe Muskoka | 418 | 207 | 25 | 650 | 11 | 453 | 360 | 813 | 92% |
| 13. North East | 487 | 142 | 44 | 673 | 4 | 605 | 454 | 1,059 | 80% |
| 14. North West | 259 | 105 | 17 | 381 | 3 | 312 | 216 | 528 | 83% |
| Total | 11,544 | 6,444 | 1,238 | 19,226 | 157 | 13,290 | 16,237 | 29,527 | 87% |

¹ Includes physicians using an OntarioMD-certified EMR, HRM, OLIS, eConsult and ConnectingOntario ClinicalViewer

² Number reflects physicians who may have withdrawn or moved LHIN boundaries during the reporting period, and where LHIN information was unavailable from the data source.

³ Source: OPHRDC (Ontario Physician Human Resource Data Centre) 2018 – please note that the total number of FPs and SPs reflects an increase of 891 physicians to the 2017 OPHRDC data point.

⁴ Includes physicians where LHIN information was unavailable.

⁵ Includes community and hospital-based specialists

Table 3: Certified EMR Offerings – Integrated Provincial EHR Products and Services

| EMR Offering | EMR Vendor | EMR-Integrated Products and Services | | | | | |
|---------------------------------------|---|--------------------------------------|----------------------|--------------------------|-------------------------------|---------------------------|---------------------------------|
| | | HRM | OLIS | eConsult | i4C Dashboard | DHDR/DHIR | ClinicalConnect |
| ABELMed EHR-EMR/PM | AbelSoft Inc. | ✓ | ✓ | | | | |
| Accuro EMR | QHR Technologies Inc. | ✓ | ✓ | ✓ ¹ | | ✓ | |
| Avaros EMR | Avaros Inc. | ✓ | ✓ | | | | |
| Cerebrum | AwareMD | ✓ | ✓ | | | | |
| Clinic Information System | P&P Data Systems Inc. | ✓ | ✓ | | | | |
| EMR Advantage | Canadian Health Systems Inc. | ✓ | ✓ | | | | |
| GlobeMed | Alpha Global IT Inc. | ✓ | ✓ | | | | |
| Indivicare | Indivica Inc. | ✓ | ✓ | | | ✓ | |
| Med Access EMR | TELUS Health Solutions | ✓ | ✓ | | | | |
| OSCAR | OSCAR EMR Inc. | ✓ | ✓ | ✓ ¹ | | ✓ | ✓ |
| OSCAR McMaster - Professional Edition | WELL EMR Group (formerly KAI Innovations) | ✓ | ✓ | | | | |
| PS Suite EMR | TELUS Health Solutions | ✓ | ✓ | | ✓ ¹ | | |
| YES EMR | YES Medical Systems | ✓ | ✓ | | | | |
| YMS EMR | YMS Inc. | ✓ | ✓ | | ✓ ¹ | ✓ | ✓ |

¹ Practice adoption is limited during proof of concept, pilot or limited production release EMR integration initiatives. Please contact your EMR vendor or your OntarioMD Practice Advisor for timing, scheduling and onboarding opportunities.

Table 4: HRM Product Penetration by Community-Based Family Physicians, Specialists and Nurse Practitioners by LHIN

| LHIN | Clinicians LIVE on HRM | | | | | Physicians Using eNotifications |
|--------------------------|------------------------|--------------|------------|---------------|---------------------|---------------------------------|
| | FP | SP | NP | Total | Change ¹ | Total |
| 1. Erie St. Clair | 294 | 133 | 91 | 518 | 19 | 415 |
| 2. South West | 539 | 108 | 88 | 735 | 17 | 594 |
| 3. Waterloo Wellington | 478 | 150 | 84 | 712 | 22 | 581 |
| 4. Hamilton Niagara | 573 | 232 | 19 | 824 | 42 | 725 |
| 5. Central West | 365 | 186 | 16 | 567 | 7 | 463 |
| 6. Mississauga Halton | 593 | 238 | 27 | 858 | 23 | 713 |
| 7. Toronto Central | 836 | 341 | 49 | 1,226 | 60 | 1,135 |
| 8. Central | 840 | 414 | 23 | 1,277 | 28 | 1,153 |
| 9. Central East | 757 | 336 | 81 | 1,174 | 33 | 990 |
| 10. South East | 320 | 52 | 81 | 453 | 1 | 420 |
| 11. Champlain | 716 | 252 | 69 | 1,037 | 22 | 979 |
| 12. North Simcoe Muskoka | 329 | 118 | 86 | 533 | 11 | 386 |
| 13. North East | 187 | 19 | 49 | 255 | 50 | 209 |
| 14. North West | 25 | 3 | 2 | 30 | 11 | 38 |
| Total | 6,925 | 2,605 | 788 | 10,318 | 351 | 9,084 |

¹Number reflects clinicians who may have withdrawn or moved LHIN boundaries during the reporting period, and where LHIN information was unavailable from the data source.

Table 5: HRM and OLIS Penetration by Physicians by LHIN

| LHIN | HRM | OLIS | HRM & OLIS | HRM & OLIS Penetration |
|--------------------------|--------------|---------------|--------------|------------------------|
| 1. Erie St. Clair | 431 | 469 | 345 | 36% |
| 2. South West | 650 | 1,116 | 569 | 26% |
| 3. Waterloo Wellington | 632 | 624 | 541 | 42% |
| 4. Hamilton Niagara | 807 | 1,278 | 668 | 22% |
| 5. Central West | 554 | 609 | 424 | 35% |
| 6. Mississauga Halton | 832 | 908 | 650 | 30% |
| 7. Toronto Central | 1,185 | 2,084 | 983 | 17% |
| 8. Central | 1,283 | 1,456 | 1,026 | 31% |
| 9. Central East | 1,099 | 1,200 | 940 | 40% |
| 10. South East | 374 | 585 | 313 | 26% |
| 11. Champlain | 970 | 1,624 | 817 | 23% |
| 12. North Simcoe Muskoka | 451 | 436 | 406 | 50% |
| 13. North East | 208 | 525 | 185 | 17% |
| 14. North West | 28 | 235 | 22 | 4% |
| Total | 9,504 | 13,149 | 7,889 | 27% |

Provincial Product/Service Penetration by LHIN

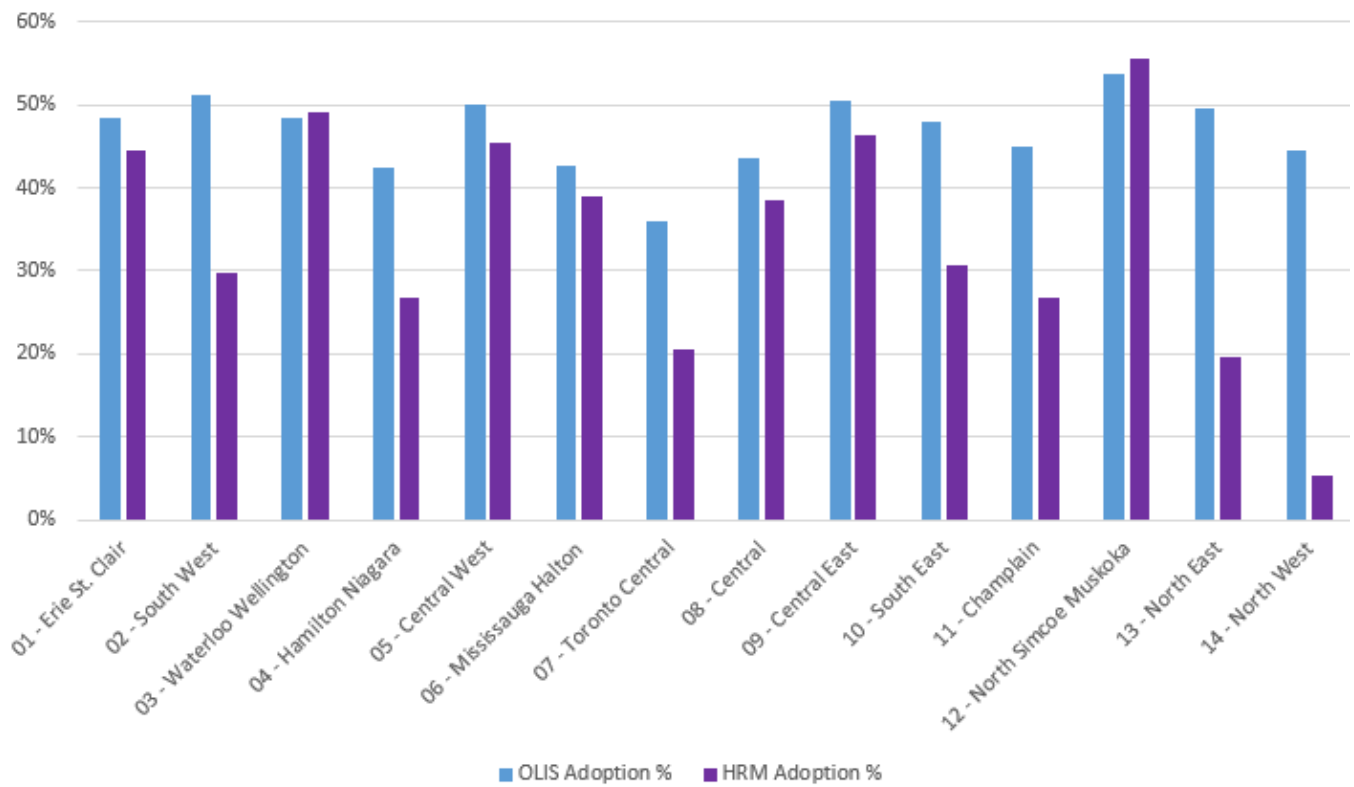


Table 6: Ontario eConsult Adoption and Utilization*

| Indicator | Ontario eConsult | Champlain BASE | OTN Tele dermatology |
|---|---|----------------|----------------------|
| # of requesting providers | 8,906 | 1,738 | 6,230 |
| # of active requesting providers ¹ | 1,409 | 633 | 460 |
| # of Specialties | 92 - BASE™ Provincial Managed Specialty Groups 100 - BASE™ Regional Managed Specialty Groups (SE LHIN) | 132 | 1 |
| # of Specialists registered | 1,013 | 256 | 35 |
| # of active Specialists ¹ | 511 | 183 | 16 |

*Source: Ontario eConsult Centre of Excellence

¹ Active includes users who participated in at least three eConsults in the last six months

Table 7: Ontario eConsult Penetration by LHIN*

| LHIN | PCPs ¹ | | | | Specialists ¹ | | | |
|--------------------------|-------------------|--------------|----------------|------------|--------------------------|------------|----------------|------------|
| | Ontario eConsult | | Champlain BASE | | Ontario eConsult | | Champlain BASE | |
| | Registered | Active | Registered | Active | Registered | Active | Registered | Active |
| 1. Erie St. Clair | 340 | 39 | | | 66 | 18 | | |
| 2. South West | 674 | 127 | | | 99 | 55 | | |
| 3. Waterloo Wellington | 546 | 207 | | | 75 | 41 | | |
| 4. Hamilton Niagara | 900 | 159 | | | 167 | 90 | | |
| 5. Central West | 261 | 51 | | | 39 | 18 | | |
| 6. Mississauga Halton | 407 | 33 | | | 19 | 9 | | |
| 7. Toronto Central | 1,599 | 222 | | | 217 | 90 | | |
| 8. Central | 857 | 93 | | | 52 | 21 | | |
| 9. Central East | 646 | 87 | | | 42 | 16 | | |
| 10. South East | 507 | 144 | | | 129 | 106 | | |
| 11. Champlain | 581 | 44 | | | 24 | 14 | | |
| 12. North Simcoe Muskoka | 513 | 71 | | | 31 | 13 | | |
| 13. North East | 688 | 99 | | | 27 | 13 | | |
| 14. North West | 366 | 32 | | | 18 | 6 | | |
| Total² | 8,906 | 1,409 | 1,738 | 633 | 926 | 504 | 256 | 183 |

*Source: Ontario eConsult Centre of Excellence; a breakdown of Champlain BASE users by LHIN is unavailable

¹ Active includes users who participated in at least three eConsults in the last six months

² Some Ontario eConsult Service users are on file with no LHIN information, hence the total will not necessarily equal the sum of all the LHINs

Table 8: Ontario eConsults Sent by LHIN*

| LHIN | September 2019 ¹ | October 2018 to September 2019 ¹ | Per 1000 (October 2018 to September 2019) | Population |
|--------------------------|-----------------------------|---|--|-------------------|
| 1. Erie St. Clair | 59 | 877 | 1.37 | 640,228 |
| 2. South West | 278 | 2,981 | 3.05 | 978,301 |
| 3. Waterloo Wellington | 452 | 4,871 | 6.23 | 781,944 |
| 4. Hamilton Niagara | 319 | 3,591 | 2.46 | 1,457,789 |
| 5. Central West | 144 | 1,472 | 1.57 | 935,304 |
| 6. Mississauga Halton | 127 | 1,687 | 1.34 | 1,258,379 |
| 7. Toronto Central | 483 | 5,012 | 3.91 | 1,281,363 |
| 8. Central | 198 | 1,911 | 1.01 | 1,895,091 |
| 9. Central East | 147 | 1,492 | 0.92 | 1,617,165 |
| 10. South East | 413 | 4,045 | 8.12 | 498,166 |
| 11. Champlain | 1,364 | 16,651 | 12.50 | 1,332,506 |
| 12. North Simcoe Muskoka | 164 | 1,680 | 3.46 | 485,738 |
| 13. North East | 413 | 4,752 | 8.45 | 562,035 |
| 14. North West | 112 | 1,295 | 5.49 | 235,883 |
| Total | 4,677² | 52,346² | 3.75 | 13,959,892 |

*Source: Ontario eConsult Centre of Excellence

¹Includes physicians and NPs using Ontario eConsult Service, Champlain BASE, Teledermatology, and Teleophthalmology

²Includes cases reported without listing a LHIN

Table 9: i4C (formerly EMR Quality) Dashboard Phase 2 Physician Participation by LHIN

| LHIN | Reach Out | Onboarded | Deployed | Training Completed |
|--------------------------|--------------|------------|------------|--------------------|
| 1. Erie St. Clair | 35 | 19 | 19 | 15 |
| 2. South West | 81 | 33 | 33 | 32 |
| 3. Waterloo Wellington | 62 | 32 | 32 | 31 |
| 4. Hamilton Niagara | 100 | 71 | 71 | 71 |
| 5. Central West | 73 | 29 | 28 | 19 |
| 6. Mississauga Halton | 75 | 43 | 43 | 42 |
| 7. Toronto Central | 60 | 45 | 45 | 45 |
| 8. Central | 61 | 42 | 42 | 42 |
| 9. Central East | 88 | 48 | 44 | 43 |
| 10. South East | 65 | 15 | 15 | 15 |
| 11. Champlain | 181 | 54 | 53 | 50 |
| 12. North Simcoe Muskoka | 51 | 14 | 14 | 14 |
| 13. North East | 51 | 8 | 8 | 8 |
| 14. North West | 69 | 16 | 16 | 16 |
| Total | 1,052 | 469 | 463 | 443 |

Table 10: OntarioMD Privacy & Security Training Completed by LHIN

| LHIN | Privacy Training Completion by Role (as of September 30, 2019) | | Total |
|--------------------------|--|----------------|--------------|
| | Physician | Sponsored User | |
| 1. Erie St. Clair | 2 | 0 | 2 |
| 2. South West | 12 | 20 | 32 |
| 3. Waterloo Wellington | 17 | 126 | 143 |
| 4. Hamilton Niagara | 36 | 4 | 40 |
| 5. Central West | 21 | 202 | 223 |
| 6. Mississauga Halton | 59 | 154 | 213 |
| 7. Toronto Central | 204 | 133 | 337 |
| 8. Central | 74 | 77 | 151 |
| 9. Central East | 67 | 43 | 110 |
| 10. South East | 48 | 60 | 108 |
| 11. Champlain | 129 | 203 | 332 |
| 12. North Simcoe Muskoka | 14 | 55 | 69 |
| 13. North East | 65 | 145 | 210 |
| 14. North West | 21 | 91 | 112 |
| Total | 769 | 1,313 | 2,082 |

Table 11: ONE ID Product Penetration by Physicians and Nurses by LHIN

| LHIN | Clinicians with ONE ID | | | |
|--------------------------|------------------------|---------------|--------------------|-------------------------|
| | Physicians | Nurses | Total ¹ | Physician Penetration % |
| 1. Erie St. Clair | 523 | 443 | 966 | 54% |
| 2. South West | 1,016 | 570 | 1,586 | 47% |
| 3. Waterloo Wellington | 749 | 377 | 1,126 | 58% |
| 4. Hamilton Niagara | 1,554 | 824 | 2,378 | 52% |
| 5. Central West | 637 | 454 | 1,091 | 52% |
| 6. Mississauga Halton | 1,123 | 1,156 | 2,279 | 53% |
| 7. Toronto Central | 4,753 | 1,270 | 6,023 | 82% |
| 8. Central | 1,775 | 925 | 2,700 | 53% |
| 9. Central East | 1,420 | 1,716 | 3,136 | 60% |
| 10. South East | 737 | 476 | 1,213 | 61% |
| 11. Champlain | 1,545 | 1,116 | 2,661 | 43% |
| 12. North Simcoe Muskoka | 638 | 633 | 1,271 | 78% |
| 13. North East | 720 | 933 | 1,653 | 68% |
| 14. North West | 355 | 410 | 765 | 67% |
| Total | 19,905 | 18,183 | 38,088 | 67% |

¹Source: eHealth Ontario and OntarioMD

²Includes clinicians where LHIN information was unavailable.

7. Appendices

Definitions:

LHIN Penetration: The % of eligible physicians or hospitals using provincial product/service; the % penetration for all LHINs is based on the denominator of 28,636 eligible physicians across all LHINs.

Ontario Average: Average % of eligible physicians or hospitals using product across all LHINs;

1.1 Appendix A: LHIN 1 – Erie St. Clair

| LHIN 1 - Provincial Product/Service % Penetration | | |
|---|--------------------|--------|
| Product | LHIN 1 Penetration | Change |
| eNotifications (Hospitals) ¹ | 78% | |
| HRM (Physicians) | 44% | |
| HRM (Hospitals) | 89% | |
| OLIS (Physicians) | 48% | |

¹OntarioMD has re-counted eligible hospital sites for HRM and eNotifications to align with the Ministry of Health's (MoH) Eligible Hospital Sites. Details of additional sites and their effect on penetration rates were provided in the April 2018 LHIN Report.

| LHIN 1 – Physicians by Vendor/OntarioMD Service | | | | | | |
|---|----------------------------------|------------|---------------|------------|------------------|--------------------------|
| EMR Vendor | Physicians Live on Certified EMR | | | | HRM ¹ | OLIS* Access Through EMR |
| | GP | SP | Not Specified | Total | | |
| ABELSoft Corporation | 8 | 7 | 4 | 19 | 7 | 21 |
| Alpha Healthcare Inc. | 4 | 1 | | 5 | 4 | 5 |
| Avaros | | | | | | |
| AwareMD | | | | | | |
| Canada Health Systems Inc. | 6 | 2 | | 8 | 10 | 5 |
| Indivica Inc. | | 1 | | 1 | 1 | 2 |
| OSCAR EMR | 15 | 10 | | 25 | 13 | 15 |
| P&P Data Systems Inc. | 1 | 2 | | 3 | 2 | 2 |
| QHR Technologies Inc. | 108 | 117 | 8 | 233 | 187 | 193 |
| TELUS | 151 | 39 | 3 | 193 | 189 | 204 |
| WELL EMR Group | | | | | | |
| YES Medical Systems | 1 | 8 | | 9 | 6 | 9 |
| York-Med Systems Inc. | | 6 | | 6 | 9 | 7 |
| Total | 294 | 193 | 15 | 502 | 428 | 463 |

*Source: eHealth Ontario

¹HRM Penetration is based on Live Physicians, not Enrolled Physicians.

| LHIN 1 - Physicians by OntarioMD-Certified EMR/Sub-Region ¹ | | | | | | |
|--|---------------------|-------------------|------------|------------|--|------------|
| EMR Vendor | Chatham City Centre | Essex South Shore | Lambton | Rural Kent | Tecumseh Lakeshore Amherstburg LaSalle | Windsor |
| ABELSoft Corporation | 2 | 2 | 4 | | | 11 |
| Alpha Healthcare Inc. | | | | | 2 | 3 |
| AwareMD | | | | | | |
| Canada Health Systems Inc. | | | | | | 8 |
| Indivica Inc. | | 1 | | | | 1 |
| OSCAR EMR | 2 | 2 | 8 | | 1 | 12 |
| P&P Data Systems Inc. | | | 1 | | | 2 |
| QHR Technologies Inc. | 39 | 30 | 38 | 12 | 27 | 87 |
| TELUS | 37 | 7 | 49 | 1 | 31 | 68 |
| WELL EMR Group | | | | | | |
| YES Medical Systems | | | | | | 9 |
| York-Med Systems Inc. | 5 | | | | | 1 |
| Total | 85 | 41 | 100 | 13 | 61 | 202 |

¹ Please see Executive Notes for an explanation of slight discrepancies between LHIN and sub-region totals.

| LHIN 1 - Physicians by Sub-Region /Service | | | |
|--|---|------------|--------------------------|
| Sub-Region | Physicians Live on Certified EMR ¹ | HRM | OLIS* Access Through EMR |
| Chatham City Centre | 85 | 63 | 71 |
| Essex South Shore | 41 | 30 | 39 |
| Lambton | 100 | 84 | 89 |
| Rural Kent | 13 | 19 | 22 |
| Tecumseh Lakeshore Amherstburg LaSalle | 61 | 54 | 47 |
| Windsor | 202 | 181 | 201 |
| Total | 502 | 431 | 469 |

*Source: eHealth Ontario

¹ Please see Executive Notes for an explanation of slight discrepancies between LHIN and sub-region totals.

| LHIN 1 - ONE ID Penetration by Sub-Region* | | | |
|--|------------|------------|------------|
| Sub-Region ¹ | Physicians | Nurses | Total |
| Chatham City Centre | 53 | 82 | 135 |
| Essex South Shore | 38 | 54 | 92 |
| Lambton | 108 | 171 | 279 |
| Rural Kent | 16 | | 16 |
| Tecumseh Lakeshore Amherstburg LaSalle | 49 | 9 | 58 |
| Windsor | 254 | 126 | 380 |
| Total | 518 | 442 | 960 |

*Source: eHealth Ontario and OntarioMD

¹Totals may be slightly lower than those for the LHIN due to not being able to map all the records to a sub-region.

| LHIN 1 – Sending Facility Status | | |
|--|-----|----------------|
| Site | HRM | eNotifications |
| Bluewater Health - Petrolia Site | Yes | Yes |
| Bluewater Health - Sarnia General Site | Yes | Yes |
| Hotel-Dieu Grace Healthcare | Yes | No |
| Erie Shores Healthcare | Yes | Yes |
| Public General Hospital Society of Chatham | Yes | Yes |
| Sydenham District Hospital | Yes | Yes |
| Maryvale | No | No |
| Windsor Regional Hospital - Metropolitan | Yes | Yes |
| Windsor Regional Hospital - Ouellette Campus | Yes | Yes |

1.2 Appendix B: LHIN 2 – South West

| LHIN 2 – Provincial Product/Service % Penetration | | |
|---|--------------------|--------|
| Product | LHIN 2 Penetration | Change |
| eNotifications (Hospitals) ¹ | 53% | |
| HRM (Physicians) | 30% | 1% |
| HRM (Hospitals) | 100% | |
| OLIS (Physicians) | 51% | |

¹OntarioMD has re-counted eligible hospital sites for HRM and eNotifications to align with the Ministry of Health Eligible Hospital Sites. Details of additional sites and their effect on penetration rates were provided in the April 2018 LHIN Report.

| LHIN 2 – Physicians by Vendor/OntarioMD Service | | | | | | |
|---|----------------------------------|------------|---------------|--------------|------------------|--------------------------|
| EMR Vendor | Physicians Live on Certified EMR | | | | HRM ¹ | OLIS* Access Through EMR |
| | GP | SP | Not Specified | Total | | |
| ABELSoft Corporation | 10 | 8 | | 18 | 4 | 20 |
| Alpha Healthcare Inc. | | 3 | | 3 | 3 | 2 |
| Avaros | 4 | | | 4 | 7 | |
| AwareMD | | | | | | |
| Canada Health Systems Inc. | 8 | 4 | | 12 | 1 | 11 |
| Indivica Inc. | | | | | | 3 |
| OSCAR EMR | 37 | 22 | | 59 | 20 | 34 |
| P&P Data Systems Inc. | 1 | 1 | | 2 | | 4 |
| QHR Technologies Inc. | 293 | 118 | 7 | 418 | 199 | 432 |
| TELUS | 495 | 120 | 10 | 625 | 410 | 570 |
| WELL EMR Group | | | | | | |
| YES Medical Systems | | 1 | | 1 | | 1 |
| York-Med Systems Inc. | 1 | 8 | | 9 | 2 | 10 |
| Total | 849 | 285 | 17 | 1,151 | 646 | 1,087 |

* Source: eHealth Ontario

¹HRM Penetration is based on Live Physicians, not Enrolled Physicians.

| LHIN 2 - Physicians by OntarioMD-Certified EMR/Sub-Region ¹ | | | | | |
|--|-----------|------------|-------------|------------------|-----------|
| EMR Vendor | Elgin | Grey Bruce | Huron Perth | London Middlesex | Oxford |
| ABELSoft Corporation | 8 | | 1 | 8 | 1 |
| Alpha Healthcare Inc. | | | | 3 | |
| Avaros | | | | 4 | |
| AwareMD | | | | | |
| Canada Health Systems Inc. | | 5 | 4 | 3 | |
| Indivica Inc. | | | | | |
| OSCAR EMR | 2 | 9 | 4 | 42 | 2 |
| P&P Data Systems Inc. | | 1 | 1 | | |
| QHR Technologies Inc. | 21 | 76 | 68 | 232 | 21 |
| TELUS | 56 | 109 | 121 | 289 | 50 |
| WELL EMR Group | | | | | |
| YES Medical Systems | | | | 1 | |
| York-Med Systems Inc. | 1 | | | 8 | |
| Total | 88 | 200 | 199 | 590 | 74 |

¹ Please see Executive Notes for an explanation of slight discrepancies between LHIN and sub-region totals.

| LHIN 2 - Physicians by Sub-Region /Service | | | |
|--|---|------------|--------------------------|
| Sub-Region | Physicians Live on Certified EMR ¹ | HRM | OLIS* Access Through EMR |
| Elgin | 88 | 47 | 76 |
| Grey Bruce | 200 | 116 | 195 |
| Huron Perth | 199 | 128 | 144 |
| London Middlesex | 590 | 295 | 615 |
| Oxford | 74 | 64 | 86 |
| Total | 1,151 | 650 | 1,116 |

*Source: eHealth Ontario

¹ Please see Executive Notes for an explanation of slight discrepancies between LHIN and sub-region totals.

| LHIN 2 - ONE ID Penetration by Sub-Region* | | | |
|--|--------------|------------|--------------|
| Sub-Region ¹ | Physicians | Nurses | Total |
| Elgin | 61 | 16 | 77 |
| Grey Bruce | 134 | 122 | 256 |
| Huron Perth | 116 | 104 | 220 |
| London Middlesex | 638 | 212 | 850 |
| Oxford | 66 | 27 | 93 |
| Total | 1,016 | 481 | 1,497 |

*Source: eHealth Ontario and OntarioMD

¹ Totals may be slightly lower than those for the LHIN due to not being able to map all the records to a sub-region.

| LHIN 2 – Sending Facility Status | | |
|---|-----|----------------|
| Site | HRM | eNotifications |
| Alexandra Hospital | Yes | No |
| Alexandra Marine and General Hospital | Yes | Yes |
| Clinton Public Hospital | Yes | Yes |
| Four Counties Health Services Corp. | Yes | No |
| Grey Bruce Health Services - Lions Head | Yes | Yes |
| Grey Bruce Health Services - Markdale Site | Yes | Yes |
| Grey Bruce Health Services - Meaford Site | Yes | Yes |
| Grey Bruce Health Services - Owen Sound | Yes | Yes |
| Grey Bruce Health Services - Southampton | Yes | Yes |
| Grey Bruce Health Services - Wiarton Site | Yes | Yes |
| Hanover And District Hospital | Yes | Yes |
| Listowel Memorial Hospital | Yes | No |
| London Health Sciences Centre - University Hospital | Yes | No |
| London Health Sciences Centre - Victoria Hospital | Yes | No |
| Seaforth Community Hospital | Yes | Yes |
| South Bruce Grey Health Centre - Chesley | Yes | Yes |
| South Bruce Grey Health Centre - Durham | Yes | Yes |
| South Bruce Grey Health Centre - Walkerton | Yes | Yes |
| South Bruce Grey Health Centre - Kincardine | Yes | Yes |
| South Huron Hospital | Yes | No |
| St. Marys Memorial Hospital | Yes | Yes |
| St. Thomas-Elgin General Hospital | Yes | No |
| St..Joseph's Health Care, London | Yes | No |
| St..Joseph's Health Care, London - Parkwood | Yes | No |
| St..Joseph's Health Care, London – St. Thomas | Yes | No |
| Stratford General Hospital | Yes | Yes |
| Strathroy Middlesex General Hospital | Yes | No |
| Tillsonburg District Memorial Hospital | Yes | No |
| Wingham and District Hospital | Yes | No |
| Woodstock General Hospital Trust | Yes | No |

1.3 Appendix C: LHIN 3 – Waterloo Wellington

| LHIN 3 – Provincial Product/Service % Penetration | | |
|---|--------------------|--------|
| Product | LHIN 3 Penetration | Change |
| eNotifications (Hospitals) ¹ | 20% | |
| HRM (Physicians) | 49% | |
| HRM (Hospitals) | 100% | |
| OLIS (Physicians) | 49% | 1% |

¹OntarioMD has re-counted eligible hospital sites for HRM and eNotifications to align with the Ministry of Health Eligible Hospital Sites. Details of additional sites and their effect on penetration rates were provided in the April 2018 LHIN Report. For LHIN 3, Grand River-Freepoint Site was added in May 2018.

| LHIN 3 - Physicians by Vendor/OntarioMD Service | | | | | | |
|---|----------------------------------|------------|---------------|------------|------------------|--------------------------|
| EMR Vendor | Physicians Live on Certified EMR | | | | HRM ¹ | OLIS* Access Through EMR |
| | GP | SP | Not Specified | Total | | |
| ABELSoft Corporation | 10 | 6 | | 16 | 10 | 7 |
| Alpha Healthcare Inc. | 2 | 2 | | 4 | 2 | 3 |
| Avaros | | | | | | |
| AwareMD | | 17 | | 17 | 21 | |
| Canada Health Systems Inc. | 2 | 5 | | 7 | 4 | 2 |
| Indivica Inc. | | 7 | | 7 | 9 | 8 |
| OSCAR EMR | 38 | 24 | 2 | 64 | 30 | 33 |
| P&P Data Systems Inc. | 26 | 3 | | 29 | 5 | 3 |
| QHR Technologies Inc. | 16 | 87 | 2 | 105 | 76 | 68 |
| TELUS | 478 | 66 | 16 | 560 | 467 | 483 |
| WELL EMR Group | | | | | | |
| YES Medical Systems | | 3 | | 3 | | 3 |
| York-Med Systems Inc. | | 5 | | 5 | 1 | 4 |
| Total | 572 | 225 | 20 | 817 | 625 | 614 |

* Source: eHealth Ontario

¹HRM Penetration is based on Live Physicians, not Enrolled Physicians.

| LHIN 3 - Physicians by OntarioMD-Certified EMR/Sub-Region ¹ | | | | |
|--|-----------------------------|-----------------|--|------------|
| EMR Vendor | Cambridge-North Dumfries | Guelph-Puslinch | Kitchener-Waterloo- Wellesley-Wilmot- Woolwich | Wellington |
| ABELSoft Corporation | 3 | | 13 | |
| Alpha Healthcare Inc. | 1 | | 3 | |
| Avaros | | | | |
| AwareMD | | | 17 | |
| Canada Health Systems Inc. | 3 | | 4 | |
| Indivica Inc. | 1 | 1 | 5 | |
| OSCAR EMR | 28 | 16 | 20 | |
| P&P Data Systems Inc. | | 8 | 21 | |
| QHR Technologies Inc. | 28 | 31 | 44 | 2 |
| TELUS | 99 | 142 | 247 | 72 |
| WELL EMR Group | | | | |
| YES Medical Systems | 1 | | 2 | |
| York-Med Systems Inc. | 1 | 2 | 2 | |
| Total | 165 | 200 | 378 | 74 |

¹Please see Executive Notes for an explanation of slight discrepancies between LHIN and sub-region totals.

| LHIN 3 - Physicians by Sub-Region /Service | | | |
|--|--|------------|-----------------------------|
| Sub-Region | Physicians Live on Certified EMR ¹ | HRM | OLIS* Access Through EMR |
| Cambridge-North Dumfries | 165 | 110 | 118 |
| Guelph-Puslinch | 200 | 140 | 143 |
| Kitchener-Waterloo- Wellesley-Wilmot-Woolwich | 378 | 310 | 290 |
| Wellington | 74 | 72 | 73 |
| Total | 817 | 632 | 624 |

*Source: eHealth Ontario

¹Please see Executive Notes for an explanation of slight discrepancies between LHIN and sub-region totals.

| LHIN 3 - ONE ID Penetration by Sub-Region* | | | |
|--|------------|------------|--------------|
| Sub-Region ¹ | Physicians | Nurses | Total |
| Cambridge-North Dumfries | 123 | 76 | 199 |
| Guelph-Puslinch | 172 | 12 | 184 |
| Kitchener-Waterloo- Wellesley-Wilmot-Woolwich | 378 | 78 | 456 |
| Wellington | 76 | 101 | 177 |
| Total | 749 | 267 | 1,016 |

*Source: eHealth Ontario and OntarioMD

¹Totals may be slightly lower than those for the LHIN due to not being able to map all the records to a sub-region.

| LHIN 3 – Sending Facility Status | | |
|---|-----|----------------|
| Site | HRM | eNotifications |
| Cambridge Memorial Hospital | Yes | Yes |
| Grand River Hospital Corp. - Freeport Site | Yes | No |
| Grand River Hospital Corp. - Waterloo Site | Yes | No |
| Groves Memorial Community Hospital | Yes | No |
| Guelph General Hospital | Yes | No |
| Homewood Health Centre Inc. | Yes | No |
| North Wellington Health Care - Mount Forest | Yes | No |
| North Wellington Health Care - Palmerston | Yes | No |
| St. Joseph's Health Centre, Guelph | Yes | No |
| St. Mary's General Hospital | Yes | Yes |

1.4 Appendix D: LHIN 4 – Hamilton Niagara Haldimand Brant

| LHIN 4 - Provincial Product/Service % Penetration | | |
|---|--------------------|--------|
| Product | LHIN 4 Penetration | Change |
| eNotifications (Hospitals) ¹ | 76% | |
| HRM (Physicians) | 27% | 1% |
| HRM (Hospitals) | 100% | |
| OLIS (Physicians) | 43% | 1% |

¹OntarioMD has re-counted eligible hospital sites for HRM and eNotifications to align with the Ministry of Health Eligible Hospital Sites. Details of additional sites and their effect on penetration rates were provided in the April 2018 LHIN Report. For LHIN 4, Hamilton Health Sciences – Juravinski Cancer Centre, Hamilton Health Sciences – McMaster Children’s Hospital, Hamilton Health Sciences – Ron Joyce Children’s Health Centre and Hamilton Health Sciences – Regional Rehab Centre were added in May 2018.

| LHIN 4 - Physicians by Vendor/OntarioMD Service | | | | | | |
|---|----------------------------------|------------|---------------|--------------|------------------|--------------------------|
| EMR Vendor | Physicians Live on Certified EMR | | | | HRM ¹ | OLIS* Access Through EMR |
| | GP | SP | Not Specified | Total | | |
| ABELSoft Corporation | 19 | 37 | 3 | 59 | 13 | 52 |
| Alpha Healthcare Inc. | 1 | 3 | 1 | 5 | | 5 |
| Avaros | | | | | | |
| AwareMD | | 3 | | 3 | 7 | |
| Canada Health Systems Inc. | 12 | 3 | 1 | 16 | 9 | 8 |
| Indivica Inc. | 9 | 15 | | 24 | 11 | 11 |
| OSCAR EMR | 146 | 87 | 3 | 236 | 84 | 137 |
| P&P Data Systems Inc. | 34 | 12 | 2 | 48 | 14 | 37 |
| QHR Technologies Inc. | 144 | 267 | 5 | 416 | 188 | 368 |
| TELUS | 621 | 113 | 9 | 743 | 467 | 638 |
| WELL EMR Group | | | | | | |
| YES Medical Systems | 1 | 1 | | 2 | | 2 |
| York-Med Systems Inc. | 1 | 16 | 1 | 18 | 9 | 16 |
| Total | 988 | 557 | 25 | 1,570 | 802 | 1,274 |

* Source: eHealth Ontario

¹HRM Penetration is based on Live Physicians, not Enrolled Physicians.

| LHIN 4 - Physicians by OntarioMD-Certified EMR/Sub-Region ¹ | | | | | | |
|--|------------|------------|-------------------|------------|------------|--------------------|
| EMR Vendor | Brant | Burlington | Haldimand Norfolk | Hamilton | Niagara | Niagara North-West |
| ABELSoft Corporation | 9 | 9 | 1 | 22 | 18 | |
| Alpha Healthcare Inc. | 2 | | | 1 | 2 | |
| Avaros | | | | | | |
| AwareMD | | 3 | | | | |
| Canada Health Systems Inc. | | | 1 | 7 | 8 | |
| Indivica Inc. | | 6 | | 17 | | 1 |
| OSCAR EMR | 7 | 29 | 16 | 147 | 29 | 8 |
| P&P Data Systems Inc. | 3 | 6 | | 18 | 21 | |
| QHR Technologies Inc. | 46 | 65 | 15 | 180 | 108 | 2 |
| TELUS | 68 | 136 | 33 | 302 | 154 | 50 |
| WELL EMR Group | | | | | | |
| YES Medical Systems | | 1 | | 1 | | |
| York-Med Systems Inc. | | | 4 | 13 | 1 | |
| Total | 135 | 255 | 70 | 708 | 341 | 61 |

¹Please see Executive Notes for an explanation of slight discrepancies between LHIN and sub-region totals.

| LHIN 4 - Physicians by Sub-Region /Service | | | |
|--|---|------------|--------------------------|
| Sub-Region | Physicians Live on Certified EMR ¹ | HRM | OLIS* Access Through EMR |
| Brant | 135 | 69 | 93 |
| Burlington | 255 | 133 | 181 |
| Haldimand Norfolk | 70 | 45 | 50 |
| Hamilton | 708 | 310 | 638 |
| Niagara | 341 | 207 | 260 |
| Niagara North-West | 61 | 43 | 56 |
| Total | 1,570 | 807 | 1,278 |

*Source: eHealth Ontario

¹Please see Executive Notes for an explanation of slight discrepancies between LHIN and sub-region totals.

| LHIN 4 – ONE ID Penetration by Sub-Region* | | | |
|--|--------------|------------|--------------|
| Sub-Region ¹ | Physicians | Nurses | Total |
| Brant | 108 | 55 | 163 |
| Burlington | 187 | 58 | 245 |
| Haldimand Norfolk | 53 | 70 | 123 |
| Hamilton | 832 | 364 | 1,196 |
| Niagara | 315 | 265 | 580 |
| Niagara North-West | 58 | 5 | 63 |
| Total | 1,553 | 817 | 2,370 |

*Source: eHealth Ontario and OntarioMD

¹ Totals may be slightly lower than those for the LHIN due to not being able to map all the records to a sub-region.

| LHIN 4 – Sending Facility Status | | |
|---|-----|----------------|
| Site | HRM | eNotifications |
| Brant Community Healthcare System - Brantford | Yes | Yes |
| Brant Community Healthcare System - Willet | Yes | No |
| Haldimand War Memorial Hospital | Yes | Yes |
| Hamilton Health Sciences Corp. - General | Yes | Yes |
| Hamilton Health Sciences Corp. - Juravinski Hospital | Yes | Yes |
| Hamilton Health Sciences Corp. - Juravinski Cancer Centre | Yes | No |
| Hamilton Health Sciences Corp. - McMaster University Medical Centre | Yes | Yes |
| Hamilton Health Sciences Corp. - McMaster Children's Hospital | Yes | No |
| Hamilton Health Sciences Corp. - St. Peter's Hospital | Yes | Yes |
| Hamilton Health Sciences Corp. - West End Clinic/Urgent Care Centre | Yes | Yes |
| Hamilton Health Sciences Corp. - Ron Joyce Children's Health Centre | Yes | No |
| Hamilton Health Sciences Corp. - West Lincoln Memorial Hospital | Yes | Yes |
| Hamilton Health Sciences Corp. - Regional Rehabilitation Centre | Yes | No |
| Joseph Brant Hospital | Yes | Yes |
| Niagara Health System - Fort Erie Douglas | Yes | Yes |
| Niagara Health System - Greater Niagara | Yes | Yes |
| Niagara Health System - Port Colborne Site | Yes | Yes |
| Niagara Health System - St. Catharines General | Yes | Yes |
| Niagara Health System - Welland County | Yes | Yes |
| Norfolk General Hospital | Yes | Yes |
| Religious Hospital of St. Joseph-Hotel Dieu | Yes | No |
| St. Joseph's Health Care System Hamilton - Charlton Campus | Yes | Yes |
| St. Joseph's Health Care System Hamilton - King Campus | Yes | Yes |
| St. Joseph's Health Care System Hamilton - West 5th Campus | Yes | Yes |
| West Haldimand General Hospital | Yes | Yes |

1.5 Appendix E: LHIN 5 – Central West

| LHIN 5 - Provincial Product/Service % Penetration | | |
|---|--------------------|--------|
| Product | LHIN 5 Penetration | Change |
| eNotifications (Hospitals) ¹ | 25% | |
| HRM (Physicians) | 45% | |
| HRM (Hospitals) | 100% | |
| OLIS (Physicians) | 50% | 1% |

¹OntarioMD has re-counted eligible hospital sites for HRM and eNotifications to align with the Ministry of Health Eligible Hospital Sites. There is no change in denominator for HRM and eNotifications sites for LHIN 5.

| LHIN 5 - Physicians by Vendor/OntarioMD Service | | | | | | |
|---|----------------------------------|------------|---------------|------------|------------------|--------------------------|
| EMR Vendor | Physicians Live on Certified EMR | | | | HRM ¹ | OLIS* Access Through EMR |
| | GP | SP | Not Specified | Total | | |
| ABELSoft Corporation | 17 | 12 | | 29 | 19 | 16 |
| Alpha Healthcare Inc. | 4 | | | 4 | 2 | 4 |
| Avaros | | | | | | |
| AwareMD | | | | | 1 | |
| Canada Health Systems Inc. | 40 | 18 | 4 | 62 | 32 | 43 |
| Indivica Inc. | 36 | 16 | | 52 | 41 | 37 |
| OSCAR EMR | 133 | 56 | 2 | 191 | 130 | 84 |
| P&P Data Systems Inc. | 62 | 4 | 2 | 68 | 44 | 42 |
| QHR Technologies Inc. | 124 | 116 | 7 | 247 | 151 | 188 |
| TELUS | 182 | 46 | 5 | 233 | 132 | 186 |
| WELL EMR Group | | | | | | |
| YES Medical Systems | 1 | 1 | 1 | 3 | | 3 |
| York-Med Systems Inc. | | 1 | | 1 | | 1 |
| Total | 599 | 270 | 21 | 890 | 552 | 604 |

*Source: eHealth Ontario

¹HRM Penetration is based on Live Physicians, not Enrolled Physicians.

| LHIN 5 - Physicians by OntarioMD-Certified EMR/Sub-Region ¹ | | | | | |
|--|----------------|------------|------------|-----------|--|
| EMR Vendor | Bolton-Caledon | Bramalea | Brampton | Dufferin | North Etobicoke Malton West Woodbridge |
| ABELSoft Corporation | | 14 | 9 | 1 | 5 |
| Alpha Healthcare Inc. | 1 | 1 | 1 | | 1 |
| Avaros | | | | | |
| AwareMD | | | | | |
| Canada Health Systems Inc. | 1 | 30 | 9 | | 22 |
| Indivica Inc. | | 7 | 13 | | 32 |
| OSCAR EMR | 2 | 37 | 114 | 6 | 32 |
| P&P Data Systems Inc. | | 37 | 7 | | 24 |
| QHR Technologies Inc. | 4 | 69 | 89 | 7 | 78 |
| TELUS | 19 | 54 | 39 | 59 | 62 |
| WELL EMR Group | | | | | |
| YES Medical Systems | | | 1 | | 2 |
| York-Med Systems Inc. | | | | | 1 |
| Total | 27 | 249 | 282 | 73 | 259 |

¹ Please see Executive Notes for an explanation of slight discrepancies between LHIN and sub-region totals.

| LHIN 5 - Physicians by Sub-Region /Service | | | |
|--|---|------------|--------------------------|
| Sub-Region | Physicians Live on Certified EMR ¹ | HRM | OLIS* Access Through EMR |
| Bolton-Caledon | 27 | 16 | 17 |
| Bramalea | 249 | 166 | 147 |
| Brampton | 282 | 157 | 172 |
| Dufferin | 73 | 52 | 70 |
| North Etobicoke Malton West Woodbridge | 259 | 163 | 203 |
| Total | 890 | 554 | 609 |

*Source: eHealth Ontario

¹Please see Executive Notes for an explanation of slight discrepancies between LHIN and sub-region totals.

| LHIN 5 – ONE ID Penetration by Sub-Region* | | | |
|--|------------|------------|------------|
| Sub-Region ¹ | Physicians | Nurses | Total |
| Bolton-Caledon | 23 | 9 | 32 |
| Bramalea | 205 | 69 | 274 |
| Brampton | 187 | 235 | 422 |
| Dufferin | 71 | 39 | 110 |
| North Etobicoke Malton West Woodbridge | 136 | 2 | 138 |
| Total | 622 | 354 | 976 |

*Source: eHealth Ontario and OntarioMD

¹ Totals may be slightly lower than those for the LHIN due to not being able to map all the records to a sub-region.

| LHIN 5 – Sending Facility Status | | |
|---|-----|----------------|
| Site | HRM | eNotifications |
| Headwaters Health Care Centre - Dufferin | Yes | Yes |
| William Osler Health System - Civic Site | Yes | No |
| William Osler Health System - Etobicoke | Yes | No |
| William Osler Health System - Peel Memorial | Yes | No |
| Headwaters Health Care Centre - Dufferin | Yes | Yes |

1.6 Appendix F: LHIN 6 – Mississauga Halton

| LHIN 6 - Provincial Product/Service % Penetration | | |
|---|---------------------------------|--------|
| Product | LHIN 6 Penetration ¹ | Change |
| eNotifications (Hospitals) ¹ | 0% | |
| HRM (Physicians) | 39% | 1% |
| HRM (Hospitals) | 100% | |
| OLIS (Physicians) | 43% | 1% |

*OntarioMD has re-counted eligible hospital sites for HRM and eNotifications to align with the Ministry of Health Eligible Hospital Sites. There is no change in denominator for HRM and eNotifications sites for LHIN 6.

| LHIN 6 - Physicians by Vendor/OntarioMD Service | | | | | | |
|---|----------------------------------|------------|---------------|--------------|------------------|--------------------------|
| EMR Vendor | Physicians Live on Certified EMR | | | | HRM ¹ | OLIS* Access Through EMR |
| | GP | SP | Not Specified | Total | | |
| ABELSoft Corporation | 18 | 27 | | 45 | 12 | 34 |
| Alpha Healthcare Inc. | 2 | 1 | 1 | 4 | 2 | 1 |
| Avaros | | | | | 20 | |
| AwareMD | | 17 | | 17 | 20 | |
| Canada Health Systems Inc. | 28 | 2 | | 30 | 30 | 30 |
| Indivica Inc. | 35 | 3 | 1 | 39 | 1 | 19 |
| OSCAR EMR | 191 | 45 | 1 | 237 | 179 | 137 |
| P&P Data Systems Inc. | 21 | 5 | | 26 | 2 | 14 |
| QHR Technologies Inc. | 193 | 132 | 8 | 333 | 231 | 298 |
| TELUS | 289 | 85 | 5 | 379 | 324 | 353 |
| WELL EMR Group | 1 | | | 1 | | |
| YES Medical Systems | 3 | 1 | | 4 | 1 | 5 |
| York-Med Systems Inc. | 1 | 3 | | 4 | 1 | 4 |
| Total | 782 | 321 | 16 | 1,119 | 823 | 895 |

* Source: eHealth Ontario

¹ HRM Penetration is based on Live Physicians, not to Enrolled Physicians.

LHIN 6 - Physicians by OntarioMD-Certified EMR/Sub-Region¹

| EMR Vendor | East Mississauga | Halton Hills | Milton | North West Mississauga | Oakville | South Etobicoke | South West Mississauga |
|----------------------------|------------------|--------------|-----------|------------------------|------------|-----------------|------------------------|
| ABELSoft Corporation | 13 | 1 | 4 | 15 | 8 | 2 | 2 |
| Alpha Healthcare Inc. | 1 | 3 | | | | | |
| Avaros | | | | | | | |
| AwareMD | 17 | | | | | | |
| Canada Health Systems Inc. | 13 | | 1 | 2 | 6 | 5 | 3 |
| Indivica Inc. | 7 | | | 7 | | 17 | 8 |
| OSCAR EMR | 102 | 9 | 20 | 41 | 28 | 7 | 30 |
| P&P Data Systems Inc. | 7 | 3 | | 3 | 1 | 11 | 1 |
| QHR Technologies Inc. | 128 | 8 | 39 | 62 | 65 | 23 | 8 |
| TELUS | 77 | 29 | 26 | 63 | 136 | 26 | 22 |
| WELL EMR Group | | | | 1 | | | |
| YES Medical Systems | 4 | | | | | | |
| York-Med Systems Inc. | | | | | 3 | 1 | |
| Total | 369 | 53 | 90 | 194 | 247 | 92 | 74 |

¹ Please see Executive Notes for an explanation of slight discrepancies between LHIN and sub-region totals.

LHIN 6 - Physicians by Sub-Region /Service

| Sub-Region | Physicians Live on Certified EMR ¹ | HRM | OLIS* Access Through EMR |
|------------------------|---|------------|--------------------------|
| East Mississauga | 369 | 212 | 241 |
| Halton Hills | 53 | 39 | 51 |
| Milton | 90 | 74 | 65 |
| North West Mississauga | 194 | 109 | 200 |
| Oakville | 247 | 241 | 200 |
| South Etobicoke | 92 | 84 | 79 |
| South West Mississauga | 74 | 73 | 72 |
| Total | 1,119 | 832 | 908 |

*Source: eHealth Ontario

¹ Please see Executive Notes for an explanation of slight discrepancies between LHIN and sub-region totals.

| LHIN 6 – ONE ID Penetration by Sub-Region* | | | |
|--|--------------|------------|--------------|
| Sub-Region ¹ | Physicians | Nurses | Total |
| East Mississauga | 289 | 372 | 661 |
| Halton Hills | 44 | 4 | 48 |
| Milton | 80 | 144 | 224 |
| North West Mississauga | 223 | 246 | 469 |
| Oakville | 259 | 69 | 328 |
| South Etobicoke | 97 | 87 | 184 |
| South West Mississauga | 108 | 43 | 151 |
| Total | 1,100 | 965 | 2,065 |

*Source: eHealth Ontario and OntarioMD

¹Totals may be slightly lower than those for the LHIN due to not being able to map all the records to a sub-region.

| LHIN 6 – Sending Facility Status | | |
|---|-----|----------------|
| Site | HRM | eNotifications |
| Halton Healthcare Services Corp. - Georgetown | Yes | No |
| Halton Healthcare Services Corp. - Milton | Yes | No |
| Halton Healthcare Services Corp. - Oakville | Yes | No |
| Trillium Health Partners - Credit Valley | Yes | No |
| Trillium Health Partners - Mississauga Site | Yes | No |
| Trillium Health Partners - Queensway Health | Yes | No |

1.7 Appendix G: LHIN 7 – Toronto Central

| LHIN 7 - Provincial Product/Service % Penetration | | |
|---|--------------------|--------|
| Product | LHIN 7 Penetration | Change |
| eNotifications (Hospitals) ¹ | 16% | |
| HRM (Physicians) | 20% | |
| HRM (Hospitals) | 68% | |
| OLIS (Physicians) | 36% | |

*OntarioMD has re-counted eligible hospital sites for HRM and eNotifications to align with the Ministry of Health Eligible Hospital Sites. Details of additional sites and their effect on penetration rates were provided in the April 2018 LHIN Report. For LHIN 7, UHN- Lyndhurst, UHN- Hillcrest and Sunnybrook Health Sciences – Orthopedic were added in May 2018.

| LHIN 7 - Physicians by Vendor/OntarioMD Service | | | | | | |
|---|----------------------------------|------------|---------------|--------------|------------------|--------------------------|
| EMR Vendor | Physicians Live on Certified EMR | | | | HRM ¹ | OLIS* Access Through EMR |
| | GP | SP | Not Specified | Total | | |
| ABELSoft Corporation | 32 | 65 | | 97 | 36 | 67 |
| Alpha Healthcare Inc. | 17 | 5 | | 22 | 13 | 21 |
| Avaros | | | | | | |
| AwareMD | | 2 | | 2 | 8 | |
| Canada Health Systems Inc. | 49 | 10 | 6 | 65 | 18 | 49 |
| Indivica Inc. | 184 | 30 | 4 | 218 | 159 | 123 |
| OSCAR EMR | 98 | 116 | 2 | 216 | 105 | 154 |
| P&P Data Systems Inc. | 33 | 17 | 2 | 52 | 2 | 42 |
| QHR Technologies Inc. | 169 | 418 | 7 | 594 | 231 | 635 |
| TELUS | 734 | 231 | 15 | 980 | 607 | 965 |
| WELL EMR Group | | | | | | |
| YES Medical Systems | 1 | 12 | 3 | 16 | | 15 |
| York-Med Systems Inc. | 1 | 4 | | 5 | | 4 |
| Total | 1,318 | 910 | 39 | 2,267 | 1,179 | 2,075 |

* Source: eHealth Ontario

¹ HRM Penetration is based on Live Physicians, not Enrolled Physicians.

| LHIN 7 - Physicians by OntarioMD-Certified EMR/Sub-Region ¹ | | | | | |
|--|--------------|------------------|------------------|---------------|--------------|
| EMR Vendor | East Toronto | Mid-East Toronto | Mid-West Toronto | North Toronto | West Toronto |
| ABELSoft Corporation | 35 | 10 | 29 | 17 | 6 |
| Alpha Healthcare Inc. | 7 | 1 | 10 | 1 | 3 |
| Avaros | | | | | |
| AwareMD | | | | | 5 |
| Canada Health Systems Inc. | 17 | 13 | 20 | 9 | 6 |
| Indivica Inc. | 18 | 25 | 98 | 60 | 17 |
| OSCAR EMR | 15 | 89 | 60 | 35 | 17 |
| P&P Data Systems Inc. | 3 | 6 | 22 | 18 | 3 |
| QHR Technologies Inc. | 73 | 99 | 273 | 116 | 33 |
| TELUS | 211 | 163 | 373 | 158 | 75 |
| WELL EMR Group | | | | | |
| YES Medical Systems | 7 | | 7 | 1 | 1 |
| York-Med Systems Inc. | 2 | | 2 | | 1 |
| Total | 388 | 406 | 894 | 415 | 164 |

¹Please see Executive Notes for an explanation of slight discrepancies between LHIN and sub-region totals.

| LHIN 7 - Physicians by Sub-Region /Service | | | |
|--|---|--------------|--------------------------|
| Sub-Region | Physicians Live on Certified EMR ¹ | HRM | OLIS* Access Through EMR |
| East Toronto | 388 | 202 | 273 |
| Mid-East Toronto | 406 | 190 | 317 |
| Mid-West Toronto | 894 | 402 | 888 |
| North Toronto | 415 | 258 | 406 |
| West Toronto | 164 | 133 | 200 |
| Total | 2,267 | 1,185 | 2,084 |

*Source: eHealth Ontario

¹Please see Executive Notes for an explanation of slight discrepancies between LHIN and sub-region totals.

| LHIN 7 – ONE ID Penetration by Sub-Region* | | | |
|--|--------------|--------------|--------------|
| Sub-Region ¹ | Physicians | Nurses | Total |
| East Toronto | 341 | 66 | 407 |
| Mid-East Toronto | 591 | 400 | 991 |
| Mid-West Toronto | 2,852 | 324 | 3,176 |
| North Toronto | 613 | 235 | 848 |
| West Toronto | 239 | 41 | 280 |
| Total | 4,636 | 1,066 | 5,702 |

*Source: eHealth Ontario and OntarioMD

¹Totals may be slightly lower than those for the LHIN due to not being able to map all the records to a sub-region.

| LHIN 7 – Sending Facility Status | | |
|---|-----|----------------|
| Site | HRM | eNotifications |
| Baycrest Hospital (North York) | Yes | No |
| Casey House Hospice | No | No |
| Centre For Addiction & Mental Health - College Street Site | Yes | No |
| Centre For Addiction & Mental Health - Queen Street Site | Yes | No |
| Holland Bloorview Kids Rehab Hospital | No | No |
| Hospital for Sick Children (The) | No | No |
| Providence Healthcare | No | No |
| Runnymede Healthcare Centre | No | No |
| Sinai Health System - Bridgepoint Site | Yes | No |
| Sinai Health System - Mount Sinai Site | Yes | Yes |
| St. Joseph's Health Centre - Toronto | Yes | Yes |
| St Michael's Hospital | Yes | Yes |
| Sunnybrook Health Sciences Centre | Yes | No |
| Sunnybrook Health Sciences Centre – Orthopaedic Surgery | Yes | No |
| Sunnybrook Health Sciences Centre – St. John's Rehab | No | No |
| Toronto East Health Network - Michael Garron Hospital | Yes | Yes |
| Salvation Army Toronto Grace Health Centre | No | No |
| University Health Network - Bickle Centre | Yes | No |
| University Health Network - General Site | Yes | No |
| University Health Network - Hillcrest | Yes | No |
| University Health Network - Lyndhurst Centre | Yes | No |
| University Health Network - Princess Margaret Cancer Centre | Yes | No |
| University Health Network – Toronto Western Site | Yes | No |
| West Park Healthcare Centre (York City) | Yes | No |
| Women's College Hospital | No | No |

1.8 Appendix H: LHIN 8 – Central

| LHIN 8 - Provincial Product/Service % Penetration | | |
|---|--------------------|--------|
| Product | LHIN 8 Penetration | Change |
| eNotifications (Hospitals) ¹ | 27% | |
| HRM (Physicians) | 39% | 1% |
| HRM (Hospitals) | 73% | |
| OLIS (Physicians) | 44% | 1% |

¹OntarioMD has re-counted eligible hospital sites for HRM and eNotifications to align with the Ministry of Health Eligible Hospital Sites. Details of additional sites and their effect on penetration rates were provided in the April 2018 LHIN Report. There is no change in denominator for HRM and eNotifications sites for LHIN 8 in May 2018.

| LHIN 8 - Physicians by Vendor/OntarioMD Service | | | | | | |
|---|----------------------------------|------------|---------------|--------------|------------------|--------------------------|
| EMR Vendor | Physicians Live on Certified EMR | | | | HRM ¹ | OLIS* Access Through EMR |
| | GP | SP | Not Specified | Total | | |
| ABELSoft Corporation | 38 | 48 | 3 | 89 | 24 | 66 |
| Alpha Healthcare Inc. | 5 | 2 | | 7 | 2 | 9 |
| Avaros | | | | | 2 | |
| AwareMD | | 19 | 1 | 20 | 29 | |
| Canada Health Systems Inc. | 33 | 21 | 1 | 55 | 39 | 36 |
| Indivica Inc. | 137 | 21 | 5 | 163 | 134 | 94 |
| OSCAR EMR | 107 | 82 | 6 | 195 | 109 | 140 |
| P&P Data Systems Inc. | 78 | 10 | | 88 | 24 | 65 |
| QHR Technologies Inc. | 258 | 208 | 13 | 479 | 394 | 505 |
| TELUS | 393 | 151 | 24 | 568 | 500 | 515 |
| WELL EMR Group | | | | | | |
| YES Medical Systems | 1 | 8 | 1 | 10 | 4 | 11 |
| York-Med Systems Inc. | 4 | 10 | 1 | 15 | 7 | 11 |
| Total | 1,054 | 580 | 55 | 1,689 | 1,268 | 1,452 |

* Source: eHealth Ontario

¹HRM Penetration is based on Live Physicians, not Enrolled Physicians.

| LHIN 8 - Physicians by OntarioMD-Certified EMR/Sub-Region ¹ | | | | | | |
|--|---------------------|--------------------|-----------------|----------------------|--------------|---------------------|
| EMR Vendor | Eastern York Region | North York Central | North York West | Northern York Region | South Simcoe | Western York Region |
| ABELSoft Corporation | 13 | 23 | 19 | 6 | 1 | 27 |
| Alpha Healthcare Inc. | | 3 | 1 | 2 | | 1 |
| Avaros | | | | | | |
| AwareMD | | 1 | | 19 | | |
| Canada Health Systems Inc. | 7 | 17 | 3 | 17 | 3 | 8 |
| Indivica Inc. | 31 | 35 | 54 | 3 | 1 | 39 |
| OSCAR EMR | 45 | 47 | 27 | 27 | | 49 |
| P&P Data Systems Inc. | 19 | 25 | 8 | | 2 | 34 |
| QHR Technologies Inc. | 108 | 165 | 36 | 78 | 2 | 90 |
| TELUS | 131 | 124 | 66 | 99 | 27 | 121 |
| WELL EMR Group | | | | | | |
| YES Medical Systems | 2 | 3 | 1 | | | 4 |
| York-Med Systems Inc. | 9 | | 2 | 2 | | 2 |
| Total | 365 | 443 | 217 | 253 | 36 | 375 |

¹Please see Executive Notes for an explanation of slight discrepancies between LHIN and sub-region totals.

| LHIN 8 - Physicians by Sub-Region /Service | | | |
|--|---|--------------|--------------------------|
| Sub-Region | Physicians Live on Certified EMR ¹ | HRM | OLIS* Access Through EMR |
| Eastern York Region | 365 | 258 | 240 |
| North York Central | 443 | 296 | 404 |
| North York West | 217 | 146 | 193 |
| Northern York Region | 253 | 224 | 185 |
| South Simcoe | 36 | 34 | 37 |
| Western York Region | 375 | 325 | 397 |
| Total | 1,689 | 1,283 | 1,456 |

*Source: eHealth Ontario

¹Please see Executive Notes for an explanation of slight discrepancies between LHIN and sub-region totals.

| LHIN 8 – ONE ID Penetration by Sub-Region* | | | |
|--|--------------|------------|--------------|
| Sub-Region ¹ | Physicians | Nurses | Total |
| Eastern York Region | 258 | 101 | 359 |
| North York Central | 465 | 188 | 653 |
| North York West | 244 | 119 | 363 |
| Northern York Region | 260 | 207 | 467 |
| South Simcoe | 55 | 44 | 99 |
| Western York Region | 476 | 69 | 545 |
| Total | 1,758 | 728 | 2,486 |

*Source: eHealth Ontario and OntarioMD

¹ Totals may be slightly lower than those for the LHIN due to not being able to map all the records to a sub-region.

| LHIN 8 – Sending Facility Status | | |
|--|-----|----------------|
| Site | HRM | eNotifications |
| Humber River Hospital - Wilson Site | Yes | No |
| Markham Stouffville Hospital | Yes | Yes |
| Markham Stouffville Hospital - Uxbridge Site | Yes | Yes |
| North York General Hospital - Branson Site | Yes | No |
| North York General Hospital - General Site | Yes | Yes |
| Shouldice Hospital | No | No |
| Don Mills Surgical Unit | No | No |
| Mackenzie Health - Vaughan Hospital | Yes | No |
| Mackenzie Health - Richmond Hill Hospital | No | No |
| Southlake Regional Health Centre | Yes | No |
| Stevenson Memorial Hospital Alliston | Yes | No |

1.9 Appendix I: LHIN 9 – Central East

| LHIN 9 - Provincial Product/Service % Penetration | | |
|---|--------------------|--------|
| Product | LHIN 9 Penetration | Change |
| eNotifications (Hospitals) ¹ | 87% | |
| HRM (Physicians) | 46% | |
| HRM (Hospitals) | 100% | |
| OLIS (Physicians) | 51% | 1% |

¹OntarioMD has re-counted eligible hospital sites for HRM and eNotifications to align with the Ministry of Health Eligible Hospital Sites. Details of additional sites and their effect on penetration rates were provided in the April 2018 LHIN Report. For LHIN 9, Lakeridge Health – Whitby was added in May 2018.

| LHIN 9 - Physicians by Vendor/OntarioMD Service | | | | | | |
|---|----------------------------------|------------|---------------|--------------|------------------|--------------------------|
| EMR Vendor | Physicians Live on Certified EMR | | | | HRM ¹ | OLIS* Access Through EMR |
| | GP | SP | Not Specified | Total | | |
| ABELSoft Corporation | 24 | 26 | 1 | 51 | 19 | 34 |
| Alpha Healthcare Inc. | 7 | 1 | | 8 | 7 | 8 |
| Avaros | | | | | | |
| AwareMD | | | | | | |
| Canada Health Systems Inc. | 57 | 14 | 3 | 74 | 56 | 46 |
| Indivica Inc. | 48 | 16 | 1 | 65 | 57 | 47 |
| OSCAR EMR | 135 | 64 | 1 | 200 | 166 | 151 |
| P&P Data Systems Inc. | 51 | 7 | 1 | 59 | 26 | 38 |
| QHR Technologies Inc. | 140 | 157 | 10 | 307 | 247 | 283 |
| TELUS | 489 | 140 | 16 | 645 | 503 | 574 |
| WELL EMR Group | | | | | | |
| YES Medical Systems | | 6 | 1 | 7 | 7 | 5 |
| York-Med Systems Inc. | 7 | 8 | | 15 | 2 | 7 |
| Total | 958 | 439 | 34 | 1,431 | 1,090 | 1,193 |

* Source: eHealth Ontario

¹HRM Penetration is based on Live Physicians, not Enrolled Physicians.

LHIN 9 - Physicians by OntarioMD-Certified EMR/Sub-Region¹

| EMR Vendor | Durham North East | Durham West | Haliburton County and City of Kawartha Lakes | Northumberland County | Peterborough City and County | Scarborough North | Scarborough South |
|----------------------------|-------------------|-------------|--|-----------------------|------------------------------|-------------------|-------------------|
| ABELSoft Corporation | 1 | 10 | 7 | 12 | 2 | 5 | 14 |
| Alpha Healthcare Inc. | 3 | | | | | 5 | |
| Avaros | | | | | | | |
| AwareMD | | | | | | | |
| Canada Health Systems Inc. | 13 | 10 | | | | 2 | 49 |
| Indivica Inc. | 23 | 12 | | | | 14 | 16 |
| OSCAR EMR | 16 | 51 | 3 | 7 | 3 | 40 | 80 |
| P&P Data Systems Inc. | 7 | 15 | | 4 | | 10 | 23 |
| QHR Technologies Inc. | 21 | 43 | 13 | 6 | 109 | 30 | 85 |
| TELUS | 307 | 81 | 61 | 38 | 63 | 34 | 61 |
| WELL EMR Group | | | | | | | |
| YES Medical Systems | | | | | | 5 | 2 |
| York-Med Systems Inc. | 2 | 3 | | | 8 | | 2 |
| Total | 393 | 225 | 84 | 67 | 185 | 145 | 332 |

¹Please see Executive Notes for an explanation of slight discrepancies between LHIN and sub-region totals.

LHIN 9 - Physicians by Sub-Region /Service

| Sub-Region | Physicians Live on Certified EMR ¹ | HRM | OLIS* Access Through EMR |
|--|---|--------------|--------------------------|
| Durham North East | 393 | 283 | 327 |
| Durham West | 225 | 150 | 158 |
| Haliburton County and City of Kawartha Lakes | 84 | 46 | 67 |
| Northumberland County | 67 | 66 | 44 |
| Peterborough City and County | 185 | 160 | 165 |
| Scarborough North | 145 | 105 | 137 |
| Scarborough South | 332 | 289 | 302 |
| Total | 1,431 | 1,099 | 1,200 |

*Source: eHealth Ontario

¹Please see Executive Notes for an explanation of slight discrepancies between LHIN and sub-region totals.

| LHIN 9 – ONE ID Penetration by Sub-Region* | | | |
|--|--------------|--------------|--------------|
| Sub-Region ¹ | Physicians | Nurses | Total |
| Durham North East | 319 | 314 | 633 |
| Durham West | 168 | 362 | 530 |
| Haliburton County and City of Kawartha Lakes | 121 | 114 | 235 |
| Northumberland County | 46 | 110 | 156 |
| Peterborough City and County | 151 | 86 | 237 |
| Scarborough North | 119 | 221 | 340 |
| Scarborough South | 429 | 328 | 757 |
| Total | 1,353 | 1,535 | 2,888 |

*Source: eHealth Ontario and OntarioMD

¹ Totals may be slightly lower than those for the LHIN due to not being able to map all the records to a sub-region.

| LHIN 9 – Sending Facility Status | | |
|--|-----|----------------|
| Site | HRM | eNotifications |
| Peterborough Regional Health Centre | Yes | Yes |
| Campbellford Memorial Hospital | Yes | Yes |
| Haliburton Highlands Health Service Corp. - Haliburton | Yes | Yes |
| Haliburton Highlands Health Service Corp. - Minden | Yes | Yes |
| Lakeridge Health – Bowmanville Hospital | Yes | Yes |
| Lakeridge Health - Oshawa Hospital | Yes | Yes |
| Lakeridge Health - Port Perry Hospital | Yes | Yes |
| Lakeridge Health - Ajax Pickering Hospital | Yes | Yes |
| Lakeridge Health - Whitby Hospital | Yes | No |
| Northumberland Hills Hospital | Yes | Yes |
| Ontario Shores Centre for Mental Health Sciences | Yes | No |
| Ross Memorial Hospital | Yes | Yes |
| Scarborough Health Network - General | Yes | Yes |
| Scarborough Health Network - Birchmount | Yes | Yes |
| Scarborough Health Network - Centenary | Yes | Yes |

1.10 Appendix J: LHIN 10 – South East

| LHIN 10 - Provincial Product/Service % Penetration | | |
|--|---------------------|--------|
| Product | LHIN 10 Penetration | Change |
| eNotifications (Hospitals) ¹ | 7% | |
| HRM (Physicians) | 31% | 1% |
| HRM (Hospitals) | 100% | |
| OLIS (Physicians) | 48% | 1% |

¹OntarioMD has re-counted eligible hospital sites for HRM and eNotifications to align with the Ministry of Health Eligible Hospital Sites. Details of additional sites and their effect on penetration rates were provided in the April 2018 LHIN Report. For LHIN 10, Brockville – St. Vincent De Paul and Brockville- St. Vincent De Paul (Garden St. Site) were added in May 2018.

| LHIN 10 - Physicians by Vendor/OntarioMD Service | | | | | | |
|--|----------------------------------|------------|---------------|------------|------------------|--------------------------|
| EMR Vendor | Physicians Live on Certified EMR | | | | HRM ¹ | OLIS* Access Through EMR |
| | GP | SP | Not Specified | Total | | |
| ABELSoft Corporation | | 10 | 1 | 11 | 3 | 10 |
| Alpha Healthcare Inc. | | | | | | |
| Avaros | | | | | | |
| AwareMD | | 4 | | 4 | | |
| Canada Health Systems Inc. | 2 | | | 2 | | 3 |
| Indivica Inc. | 15 | 5 | | 20 | 17 | 13 |
| OSCAR EMR | 49 | 14 | 2 | 65 | 36 | 56 |
| P&P Data Systems Inc. | 4 | 2 | | 6 | 3 | 6 |
| QHR Technologies Inc. | 49 | 47 | 3 | 99 | 58 | 99 |
| TELUS | 312 | 38 | 13 | 363 | 254 | 388 |
| WELL EMR Group | | | | | | |
| YES Medical Systems | | 1 | | 1 | 1 | 1 |
| York-Med Systems Inc. | | 1 | | 1 | 1 | 1 |
| Total | 431 | 122 | 19 | 572 | 373 | 577 |

* Source: eHealth Ontario

¹HRM Penetration is based on Live Physicians, not Enrolled Physicians.

| LHIN 10 - Physicians by OntarioMD-Certified EMR/Sub-Region ¹ | | | | | |
|---|------------|---------------------------|------------|-------------------------------------|----------------|
| EMR Vendor | Kingston | Lanark, Leeds & Grenville | Quinte | Rural Frontenac, Lennox & Addington | Rural Hastings |
| ABELSoft Corporation | 5 | 2 | 4 | | |
| Alpha Healthcare Inc. | | | | | |
| Avaros | | | | | |
| AwareMD | | | 4 | | |
| Canada Health Systems Inc. | 2 | | | | |
| Indivica Inc. | 17 | 2 | | | 1 |
| OSCAR EMR | 35 | 3 | 27 | | |
| P&P Data Systems Inc. | | 1 | 5 | | |
| QHR Technologies Inc. | 46 | 9 | 44 | | |
| TELUS | 164 | 98 | 54 | 33 | 14 |
| WELL EMR Group | | | | | |
| YES Medical Systems | | | 1 | | |
| York-Med Systems Inc. | | 1 | | | |
| Total | 269 | 116 | 139 | 33 | 15 |

¹Please see Executive Notes for an explanation of slight discrepancies between LHIN and sub-region totals.

| LHIN 10 - Physicians by Sub-Region /Service | | | |
|---|---|------------|--------------------------|
| Sub-Region | Physicians Live on Certified EMR ¹ | HRM | OLIS* Access Through EMR |
| Kingston | 269 | 133 | 251 |
| Lanark, Leeds & Grenville | 116 | 95 | 133 |
| Quinte | 139 | 101 | 133 |
| Rural Frontenac, Lennox & Addington | 33 | 24 | 24 |
| Rural Hastings | 15 | 21 | 44 |
| Total | 572 | 374 | 585 |

*Source: eHealth Ontario

¹Please see Executive Notes for an explanation of slight discrepancies between LHIN and sub-region totals.

| LHIN 10 – ONE ID Penetration by Sub-Region* | | | |
|---|------------|------------|--------------|
| Sub-Region ¹ | Physicians | Nurses | Total |
| Kingston | 411 | 149 | 560 |
| Lanark, Leeds & Grenville | 121 | 88 | 209 |
| Quinte | 123 | 134 | 257 |
| Rural Frontenac, Lennox & Addington | 39 | 19 | 58 |
| Rural Hastings | 23 | 4 | 27 |
| Total | 717 | 394 | 1,111 |

*Source: eHealth Ontario and OntarioMD

¹ Totals may be slightly lower than those for the LHIN due to not being able to map all the records to a sub-region.

| LHIN 10 – Sending Facility Status | | |
|---|-----|----------------|
| Site | HRM | eNotifications |
| Brockville General Hospital | Yes | No |
| Brockville General Hospital – St. Vincent De Paul | Yes | No |
| Brockville General Hospital – St. Vincent De Paul (Garden St. Site) | Yes | No |
| Hotel Dieu Hospital - Kingston | Yes | No |
| Kingston General Hospital | Yes | Yes |
| Lennox and Addington County General Hospital | Yes | No |
| Perth & Smith Falls District Hospital - Perth Site | Yes | No |
| Perth & Smith Falls District Hospital - Smiths Falls | Yes | No |
| Providence Care Hospital | Yes | No |
| Quinte Healthcare Corp. - North Hastings Hospital (Bancroft) | Yes | No |
| Quinte Healthcare Corp. - Belleville General Hospital | Yes | No |
| Quinte Healthcare Corp. - Prince Edward County Memorial Hospital (Picton) | Yes | No |
| Quinte Healthcare Corp. – Trenton Memorial Hospital | Yes | No |
| Royal Ottawa Health Care Group - Brockville Mental Health Centre | Yes | No |

1.11 Appendix K: LHIN 11 – Champlain

| LHIN 11 - Provincial Product/Service % Penetration | | |
|--|---------------------|--------|
| Product | LHIN 11 Penetration | Change |
| eNotifications (Hospitals) ¹ | 67% | |
| HRM (Physicians) | 27% | 1% |
| HRM (Hospitals) | 79% | |
| OLIS (Physicians) | 45% | |

¹OntarioMD has re-counted eligible hospital sites for HRM and eNotifications to align with the Ministry of Health Eligible Hospital Sites. Details of additional sites and their effect on penetration rates were provided in the April 2018 LHIN Report. There is no change in denominator for HRM and eNotifications sites for LHIN 11 in May 2018.

| LHIN 11 - Physicians by Vendor/OntarioMD Service | | | | | | |
|--|----------------------------------|------------|---------------|--------------|------------------|--------------------------|
| EMR Vendor | Physicians Live on Certified EMR | | | | HRM ¹ | OLIS* Access Through EMR |
| | GP | SP | Not Specified | Total | | |
| ABELSoft Corporation | 4 | 31 | | 35 | 2 | 19 |
| Alpha Healthcare Inc. | | 1 | | 1 | 1 | |
| Avaros | | | | | | |
| AwareMD | | 1 | | 1 | 1 | |
| Canada Health Systems Inc. | 56 | 49 | 3 | 108 | 60 | 57 |
| Indivica Inc. | 53 | 9 | 1 | 63 | 47 | 58 |
| OSCAR EMR | 146 | 52 | 1 | 199 | 144 | 130 |
| P&P Data Systems Inc. | 48 | 2 | 1 | 51 | 13 | 22 |
| QHR Technologies Inc. | 163 | 172 | 5 | 340 | 143 | 300 |
| TELUS | 893 | 205 | 19 | 1,117 | 554 | 1,020 |
| WELL EMR Group | | | | | | |
| YES Medical Systems | | | | | | |
| York-Med Systems Inc. | | 2 | | 2 | | 2 |
| Total | 1,363 | 524 | 30 | 1,917 | 965 | 1,608 |

* Source: eHealth Ontario

¹HRM Penetration is based on Live Physicians, not Enrolled Physicians.

| LHIN 11 - Physicians by OntarioMD-Certified EMR/Sub-Region ¹ | | | | | |
|---|----------------|-------------------|----------------|-------------------|----------------|
| EMR Vendor | Central Ottawa | Eastern Champlain | Eastern Ottawa | Western Champlain | Western Ottawa |
| ABELSoft Corporation | 30 | 2 | 1 | 2 | |
| Alpha Healthcare Inc. | | | | | 1 |
| Avaros | | | | | |
| AwareMD | 1 | | | | |
| Canada Health Systems Inc. | 55 | 13 | 7 | 1 | 32 |
| Indivica Inc. | 43 | 1 | 10 | 7 | 2 |
| OSCAR EMR | 101 | 4 | 16 | 16 | 62 |
| P&P Data Systems Inc. | 6 | 31 | 1 | | 13 |
| QHR Technologies Inc. | 224 | 23 | 12 | 29 | 52 |
| TELUS | 614 | 124 | 150 | 131 | 98 |
| WELL EMR Group | | | | | |
| YES Medical Systems | | | | | |
| York-Med Systems Inc. | 1 | | | 1 | |
| Total | 1,075 | 198 | 197 | 187 | 260 |

¹Please see Executive Notes for an explanation of slight discrepancies between LHIN and sub-region totals.

| LHIN 11 - Physicians by Sub-Region /Service | | | |
|---|---|------------|--------------------------|
| Sub-Region | Physicians Live on Certified EMR ¹ | HRM | OLIS* Access Through EMR |
| Central Ottawa | 1,075 | 390 | 857 |
| Eastern Champlain | 198 | 79 | 152 |
| Eastern Ottawa | 197 | 141 | 208 |
| Western Champlain | 187 | 151 | 172 |
| Western Ottawa | 260 | 209 | 235 |
| Total | 1,917 | 970 | 1,624 |

*Source: eHealth Ontario

¹Please see Executive Notes for an explanation of slight discrepancies between LHIN and sub-region totals.

| LHIN 11 – ONE ID Penetration by Sub-Region* | | | |
|---|--------------|------------|--------------|
| Sub-Region ¹ | Physicians | Nurses | Total |
| Central Ottawa | 858 | 248 | 1,106 |
| Eastern Champlain | 145 | 231 | 376 |
| Eastern Ottawa | 175 | 80 | 255 |
| Western Champlain | 154 | 197 | 351 |
| Western Ottawa | 209 | 114 | 323 |
| Total | 1,541 | 870 | 2,411 |

*Source: eHealth Ontario and OntarioMD

¹Totals may be slightly lower than those for the LHIN due to not being able to map all the records to a sub-region.

| LHIN 11 – Sending Facility Status | | |
|---|-----|----------------|
| Site | HRM | eNotifications |
| Almonte General Hospital | Yes | No |
| Arnprior Regional Health | Yes | Yes |
| Bruyère Continuing Care Inc. - Saint Vincent Hospital | No | No |
| Bruyère Continuing Care Inc. - Elisabeth Bruyère Hospital | No | No |
| Carleton Place and District Memorial Hospital | Yes | Yes |
| Children's Hospital of Eastern Ontario | Yes | No |
| Cornwall Community Hospital | Yes | Yes |
| Deep River and District Hospital | Yes | No |
| Glengarry Memorial Hospital | No | Yes |
| Hawkesbury and District General Hospital | Yes | Yes |
| Hôpital Montfort | No | Yes |
| Hotel Dieu Hospital of Cornwall | Yes | No |
| Kemptville District Hospital | Yes | Yes |
| Ottawa Hospital (The) - Civic Site | Yes | Yes |
| Ottawa Hospital (The) - General Site | Yes | Yes |
| Ottawa Hospital (The) - Riverside Site | Yes | No |
| Ottawa Hospital (The) - The Rehab Centre | Yes | Yes |
| Pembroke Regional Hospital Inc. | Yes | Yes |
| Queensway-Carleton Hospital | Yes | Yes |
| Renfrew Victoria Hospital | Yes | Yes |
| Royal Ottawa Health Care Group - Mental Health | No | No |
| St. Francis Memorial Hospital | Yes | Yes |
| University of Ottawa Heart Institute | Yes | Yes |
| Winchester District Memorial Hospital | Yes | Yes |

1.12 Appendix L: LHIN 12 – North Simcoe Muskoka

| LHIN 12 - Provincial Product/Service % Penetration | | |
|--|---------------------|--------|
| Product | LHIN 12 Penetration | Change |
| eNotifications (Hospitals) ¹ | 13% | |
| HRM (Physicians) | 55% | 1% |
| HRM (Hospitals) | 100% | |
| OLIS (Physicians) | 54% | 1% |

¹OntarioMD has re-counted eligible hospital sites for HRM and eNotifications to align with the Ministry of Health Eligible Hospital Sites. Details of additional sites and their effect on penetration rates were provided in the April 2018 LHIN Report. There is no change in denominator for HRM and eNotifications sites for LHIN 12 in May 2018.

| LHIN 12 - Physicians by Vendor/OntarioMD Service | | | | | | |
|--|----------------------------------|------------|---------------|------------|------------------|--------------------------|
| EMR Vendor | Physicians Live on Certified EMR | | | | HRM ¹ | OLIS* Access Through EMR |
| | GP | SP | Not Specified | Total | | |
| ABELSoft Corporation | | 7 | 1 | 8 | 4 | 3 |
| Alpha Healthcare Inc. | 5 | | | 5 | 3 | 4 |
| Avaros | | | | | | |
| AwareMD | | | | | | |
| Canada Health Systems Inc. | | | 1 | 1 | | 1 |
| Indivica Inc. | 2 | 2 | | 4 | 1 | 2 |
| OSCAR EMR | 7 | 6 | | 13 | 15 | 7 |
| P&P Data Systems Inc. | | 1 | | 1 | | |
| QHR Technologies Inc. | 189 | 97 | 4 | 290 | 221 | 206 |
| TELUS | 181 | 48 | 7 | 236 | 198 | 210 |
| WELL EMR Group | | | | | | |
| YES Medical Systems | | | | | | |
| York-Med Systems Inc. | 1 | 2 | | 2 | 2 | 2 |
| Total | 385 | 163 | 13 | 561 | 444 | 435 |

* Source: eHealth Ontario

¹HRM Penetration is based on Live Physicians, not Enrolled Physicians.

| LHIN 12 - Physicians by OntarioMD-Certified EMR/Sub-Region ¹ | | | | | |
|---|-----------------|-------------|-----------|--------------|--------------------|
| EMR Vendor | Barrie and Area | Couchiching | Muskoka | North Simcoe | South Georgian Bay |
| ABELSoft Corporation | 7 | 1 | | | |
| Alpha Healthcare Inc. | | | 5 | | |
| Avaros | | | | | |
| AwareMD | | | | | |
| Canada Health Systems Inc. | 1 | | | | |
| Indivica Inc. | 2 | 1 | | 1 | |
| OSCAR EMR | 8 | 3 | 1 | 1 | |
| P&P Data Systems Inc. | 1 | | | | |
| QHR Technologies Inc. | 229 | 19 | 2 | 36 | 4 |
| TELUS | 20 | 67 | 70 | 15 | 64 |
| WELL EMR Group | | | | | |
| YES Medical Systems | | | | | |
| York-Med Systems Inc. | 2 | 1 | | | |
| Total | 270 | 92 | 78 | 53 | 68 |

¹ Please see Executive Notes for an explanation of slight discrepancies between LHIN and sub-region totals.

| LHIN 12 - Physicians by Sub-Region /Service | | | |
|---|---|------------|--------------------------|
| Sub-Region | Physicians Live on Certified EMR ¹ | HRM | OLIS* Access Through EMR |
| Barrie and Area | 270 | 211 | 174 |
| Couchiching | 92 | 64 | 77 |
| Muskoka | 78 | 66 | 68 |
| North Simcoe | 53 | 38 | 56 |
| South Georgian Bay | 68 | 72 | 61 |
| Total | 561 | 451 | 436 |

*Source: eHealth Ontario

¹ Please see Executive Notes for an explanation of slight discrepancies between LHIN and sub-region totals.

| LHIN 12 – ONE ID Penetration by Sub-Region* | | | |
|---|------------|------------|--------------|
| Sub-Region ¹ | Physicians | Nurses | Total |
| Barrie and Area | 309 | 178 | 487 |
| Couchiching | 87 | 85 | 172 |
| Muskoka | 94 | 138 | 232 |
| North Simcoe | 79 | 61 | 140 |
| South Georgian Bay | 67 | 84 | 151 |
| Total | 636 | 546 | 1,182 |

*Source: eHealth Ontario and OntarioMD

¹Totals may be slightly lower than those for the LHIN due to not being able to map all the records to a sub-region.

| LHIN 12 – Sending Facility Status | | |
|--|-----|----------------|
| Site | HRM | eNotifications |
| Collingwood General and Marine Hospital | Yes | No |
| Georgian Bay General Hospital - Midland Site | Yes | No |
| Georgian Bay General Hospital - Penetanguishene Site | Yes | No |
| Muskoka Algonquin Healthcare - South Muskoka Memorial Hospital (Bracebridge) | Yes | No |
| Muskoka Algonquin Healthcare - Huntsville District Memorial Hospital | Yes | No |
| Orillia Soldiers' Memorial Hospital | Yes | No |
| Royal Victoria Regional Health Centre | Yes | Yes |
| Waypoint Centre for Mental Health Care | Yes | No |

1.13 Appendix M: LHIN 13 – North East

| LHIN 13 - Provincial Product/Service % Penetration | | |
|--|----------------------------------|--------|
| Product | LHIN 13 Penetration ¹ | Change |
| eNotifications (Hospitals) ¹ | 38% | |
| HRM (Physicians) | 20% | 2% |
| HRM (Hospitals) | 88% | -3% |
| OLIS (Physicians) | 50% | 1% |

¹OntarioMD has re-counted eligible hospital sites for HRM and eNotifications to align with the Ministry of Health Eligible Hospital Sites. Details of additional sites and their effect on penetration rates were provided in the April 2018 LHIN Report. There is no change in denominator for HRM and eNotifications sites for LHIN 13 in May 2018.

| LHIN 13 - Physicians by Vendor/OntarioMD Service | | | | | | |
|--|----------------------------------|-----------|---------------|------------|------------------|--------------------------|
| EMR Vendor | Physicians Live on Certified EMR | | | | HRM ¹ | OLIS* Access Through EMR |
| | GP | SP | Not Specified | Total | | |
| ABELSoft Corporation | 1 | 7 | | 8 | | 5 |
| Alpha Healthcare Inc. | | 1 | | 1 | | 1 |
| Avaros | | | | | | |
| AwareMD | | | | | | |
| Canada Health Systems Inc. | 3 | 1 | | 4 | | 5 |
| Indivica Inc. | 3 | | | 3 | | 4 |
| OSCAR EMR | 22 | 2 | | 24 | 10 | 12 |
| P&P Data Systems Inc. | 25 | 4 | 1 | 30 | | 8 |
| QHR Technologies Inc. | 61 | 28 | 1 | 90 | 31 | 111 |
| TELUS | 309 | 46 | 10 | 365 | 166 | 365 |
| WELL EMR Group | | | | | | |
| YES Medical Systems | | | | | | |
| York-Med Systems Inc. | 7 | 1 | | 8 | 1 | 8 |
| Total | 431 | 90 | 12 | 533 | 195 | 519 |

* Source: eHealth Ontario

¹HRM Penetration is based on Live Physicians, not Enrolled Physicians.

| LHIN 13 - Physicians by OntarioMD-Certified EMR/Sub-Region ¹ | | | | | |
|---|-----------|------------|-----------------------------|-----------------------|--------------------------------|
| OntarioMD Certified Vendor | Algoma | Cochrane | James and Hudson Bay Coasts | Nipissing-Temiskaming | Sudbury-Manitoulin-Parry Sound |
| ABELSoft Corporation | 5 | 2 | | | 1 |
| Alpha Healthcare Inc. | | | | 1 | |
| Avaros | | | | | |
| AwareMD | | | | | |
| Canada Health Systems Inc. | | 1 | 1 | 1 | 1 |
| Indivica Inc. | 1 | 1 | | | 1 |
| OSCAR EMR | 2 | 2 | | 9 | 11 |
| P&P Data Systems Inc. | | | | 21 | 9 |
| QHR Technologies Inc. | 32 | 16 | | 17 | 25 |
| TELUS | 30 | 81 | 19 | 93 | 142 |
| WELL EMR Group | | | | | |
| YES Medical Systems | | | | | |
| York-Med Systems Inc. | 7 | | | | 1 |
| Total | 77 | 103 | 20 | 142 | 191 |

¹Please see Executive Notes for an explanation of slight discrepancies between LHIN and sub-region totals.

| LHIN 13 - Physicians by Sub-Region /Service | | | |
|---|---|------------|--------------------------|
| Sub-Region | Physicians Live on Certified EMR ¹ | HRM | OLIS* Access Through EMR |
| Algoma | 77 | 19 | 66 |
| Cochrane | 103 | 47 | 85 |
| James and Hudson Bay Coasts | 20 | 4 | 27 |
| Nipissing-Temiskaming | 142 | 48 | 126 |
| Sudbury-Manitoulin-Parry Sound | 191 | 90 | 221 |
| Total | 533 | 208 | 525 |

*Source: eHealth Ontario

¹Please see Executive Notes for an explanation of slight discrepancies between LHIN and sub-region totals.

| LHIN 13 – ONE ID Penetration by Sub-Region* | | | |
|---|------------|------------|--------------|
| Sub-Region ¹ | Physicians | Nurses | Total |
| Algoma | 125 | 163 | 288 |
| Cochrane | 80 | 176 | 256 |
| James and Hudson Bay Coasts | 6 | 6 | 12 |
| Nipissing-Temiskaming | 150 | 245 | 395 |
| Sudbury-Manitoulin-Parry Sound | 314 | 336 | 650 |
| Total | 675 | 926 | 1,601 |

*Source: eHealth Ontario and OntarioMD

¹Totals may be slightly lower than those for the LHIN due to not being able to map all the records to a sub-region.

| LHIN 13 – Sending Facility Status | | |
|--|-----|----------------|
| Site | HRM | eNotifications |
| Anson General Hospital | Yes | No |
| Bingham Memorial Hospital | Yes | No |
| Englehart and District Hospital | Yes | Yes |
| Espanola General Hospital | Yes | Yes |
| Health Sciences North - Ramsey Lake Health Centre | Yes | Yes |
| Health Sciences North - Sudbury Outpatient Centre | Yes | No |
| Health Sciences North - Sudbury Mental Health & Addictions Centre | Yes | No |
| Hôpital Notre Dame Hospital (Hearst) | Yes | No |
| Hornepayne Community Hospital | Yes | No |
| Kirkland and District Hospital | Yes | Yes |
| Lady Dunn Health Centre | Yes | No |
| Lady Minto Hospital (The) | Yes | No |
| Manitoulin Health Centre - Little Current | Yes | No |
| Manitoulin Health Centre - Mindemoya Unit | Yes | No |
| Mattawa General Hospital | Yes | No |
| North Bay Regional Health Centre | No | No |
| North Bay Regional Health Centre - Kirkwood Place | No | No |
| North Shore Health Network - Blind River Site | Yes | Yes |
| North Shore Health Network - Richards Landing Site | Yes | No |
| North Shore Health Network - Thessalon Site | Yes | No |
| Sault Area Hospital - Sault Ste Marie | Yes | No |
| Sensenbrenner Hospital (The) | Yes | No |
| Services de Sante de Chapleau Health Services | Yes | Yes |
| Smooth Rock Falls Hospital | Yes | No |
| St. Joseph's General Hospital - Elliot Lake | Yes | Yes |
| St. Joseph's Continuing Care Centre of Sudbury | No | No |
| Temiskaming Hospital | Yes | Yes |
| Timmins & District General Hospital | Yes | Yes |
| Weeneebayko Area Health Authority – Attawapiskat Hospital | Yes | Yes |
| Weeneebayko Area Health Authority - Fort Albany Hospital | Yes | Yes |
| Weeneebayko Area Health Authority – Weeneebayko General Hospital (Moose Factory) | Yes | Yes |
| Weeneebayko Area Health Authority – Moosonee Health Centre | Yes | Yes |
| West Nipissing General Hospital | Yes | No |
| West Parry Sound Health Centre | No | No |

1.14 Appendix N: LHIN 14 – North West

| LHIN 14 - Provincial Product/Service % Penetration | | |
|--|---------------------|--------|
| Product | LHIN 14 Penetration | Change |
| eNotifications (Hospitals) ¹ | 100% | |
| HRM (Physicians) | 5% | 1% |
| HRM (Hospitals) | 100% | |
| OLIS (Physicians) | 45% | 2% |

¹OntarioMD has re-counted eligible hospital sites for HRM and eNotifications to align with the Ministry of Health Eligible Hospital Sites. Details of additional sites and their effect on penetration rates were provided in the April 2018 LHIN Report. There is no change in denominator for HRM and eNotifications sites for LHIN 14 in May 2018.

| LHIN 14 - Physicians by Vendor/OntarioMD Service | | | | | | |
|--|----------------------------------|-----------|---------------|------------|------------------|--------------------------|
| EMR Vendor | Physicians Live on Certified EMR | | | | HRM ¹ | OLIS* Access Through EMR |
| | GP | SP | Not Specified | Total | | |
| ABELSoft Corporation | 5 | 2 | | 7 | | 8 |
| Alpha Healthcare Inc. | | | | | | |
| Avaros | | | | | | |
| AwareMD | | | | | | |
| Canada Health Systems Inc. | 3 | 3 | | 6 | | 4 |
| Indivica Inc. | 1 | | | 1 | | 2 |
| OSCAR EMR | 64 | 1 | 2 | 67 | | 11 |
| P&P Data Systems Inc. | 16 | 4 | | 20 | | 2 |
| QHR Technologies Inc. | 38 | 24 | | 62 | 5 | 68 |
| TELUS | 107 | 41 | 4 | 152 | 23 | 138 |
| WELL EMR Group | | | | | | |
| YES Medical Systems | | | | | | 1 |
| York-Med Systems Inc. | | | | | | |
| Total | 234 | 75 | 6 | 315 | 28 | 234 |

* Source: eHealth Ontario

¹HRM Penetration is based on Live Physicians, not Enrolled Physicians.

| LHIN 14 - Physicians by OntarioMD-Certified EMR/Sub-Region ¹ | | | | | |
|---|---------------------|--------------------|-------------------------|-------------------------|-----------|
| EMR Vendor | City of Thunder Bay | District of Kenora | District of Rainy River | District of Thunder Bay | Northern |
| ABELSoft Corporation | 2 | | | 5 | |
| Alpha Healthcare Inc. | | | | | |
| Avaros | | | | | |
| AwareMD | | | | | |
| Canada Health Systems Inc. | 4 | 2 | | | |
| Indivica Inc. | | | | 1 | |
| OSCAR EMR | 34 | | | | 33 |
| P&P Data Systems Inc. | 1 | 18 | | | 1 |
| QHR Technologies Inc. | 33 | 7 | 14 | 5 | 3 |
| TELUS | 91 | 30 | 8 | 19 | 4 |
| WELL EMR Group | | | | | |
| YES Medical Systems | | | | | |
| York-Med Systems Inc. | | | | | |
| Total | 165 | 57 | 22 | 30 | 41 |

¹Please see Executive Notes for an explanation of slight discrepancies between LHIN and sub-region totals.

| LHIN 14 - Physicians by Sub-Region /Service | | | |
|---|---|-----------|--------------------------|
| Sub-Region | Physicians Live on Certified EMR ¹ | HRM | OLIS* Access Through EMR |
| City of Thunder Bay | 165 | 8 | 114 |
| District of Kenora | 57 | 7 | 34 |
| District of Rainy River | 22 | 13 | 25 |
| District of Thunder Bay | 30 | | 41 |
| Northern | 41 | | 21 |
| Total | 315 | 28 | 235 |

*Source: eHealth Ontario

¹Please see Executive Notes for an explanation of slight discrepancies between LHIN and sub-region totals.

| LHIN 14 – ONE ID Penetration by Sub-Region* | | | |
|---|------------|------------|------------|
| Sub-Region ¹ | Physicians | Nurses | Total |
| City of Thunder Bay | 225 | 231 | 456 |
| District of Kenora | 57 | 134 | 191 |
| District of Rainy River | 27 | 17 | 44 |
| District of Thunder Bay | 24 | 12 | 36 |
| Northern | 22 | 2 | 24 |
| Total | 355 | 396 | 751 |

*Source: eHealth Ontario & OntarioMD

¹Totals may be slightly lower than those for the LHIN due to not being able to map all the records to a sub-region.

| LHIN 14 – Sending Facility Status | | |
|---|-----|----------------|
| Site | HRM | eNotifications |
| Atikokan General Hospital | Yes | Yes |
| Dryden Regional Health Centre | Yes | Yes |
| Geraldton District Hospital | Yes | Yes |
| Lake-of-the-Woods District Hospital | Yes | Yes |
| Manitouwadge General Hospital | Yes | Yes |
| Nipigon District Memorial Hospital | Yes | Yes |
| North of Superior Healthcare Group - McCausland Hospital (The) | Yes | Yes |
| North of Superior Healthcare Group - Wilson Memorial General Hospital | Yes | Yes |
| Red Lake Margaret Cochenour Memorial Hospital (The) | Yes | Yes |
| Riverside Health Care - Emo Health Centre | Yes | Yes |
| Riverside Health Care - La Verendrye Hospital | Yes | Yes |
| Riverside Health Care - Rainy River Health Centre | Yes | Yes |
| Sioux Lookout Meno Ya Win Health Centre | Yes | Yes |
| St. Joseph's Care Group - St Joseph's Hospital | Yes | Yes |
| St. Joseph's Care Group - Lakehead Psychiatric Hospital | Yes | Yes |
| Thunder Bay Regional Health Sciences Centre | Yes | Yes |